



SCD2735-A (Double Side Square LCD Display)
27.3" Resizing LCD, 1000 nits LED backlight, 945x1080 Square aspect ratio 8:9

SCD2735 is an innovative Square, sunlight readable, LED backlight LCD display. It provides LCD panel with specific ratios for digital signage, public transportation, exhibition hall, department store, vending machine and industrial applications. Incorporating with A.D. control board and backlight design, it is high brightness and sunlight readable panel, can display high-quality video with energy-efficient.

Key Features

- Resizing LCD
- Double Side LCD Display
- Square Screen (8 : 9)
- Sunlight Readable
- LED Backlight
- High Brightness 1000 nits
- Low Power Consumption
- Wide Dimming
- Slim Bezel
- Life Expectancy (70,000hrs)
- Wide Viewing Angle
- Thickness: 40mm



| Specifications | | Preliminary |
|-----------------------------------|--|-------------|
| Model No. | SCD2735-A | |
| Description | 27.3" Resizing LCD, 1000 nits LED backlight, 945x1080 | |
| Display Area | 457.85 x 523.26 mm | |
| Brightness | 1000 cd/m ² | |
| Resolution | 945 x 1080 | |
| Aspect Ratio | 8 : 9 | |
| Contrast Ratio | 3000:1 | |
| Pixel Pitch (mm) | 0.4845 (H) x 0.4845(W) | |
| Viewing Angle | 178°(H), 178°(V) | |
| Display Colors | 16.7M | |
| Response Time (Typical) | 6.5 ms | |
| Sync | LVDS | |
| Power Consumption | 100W | |
| Dimensions (mm) | 649.5 x 571.9 x 368 | |
| Weight (Net) | 18.5 kg | |
| LED Driving Board | LID27A | |
| Control Board (Optional) | AD2662GDHMA | |
| <input type="checkbox"/> AD2662GD | VGA + DVI + HDMI + Audio | |
| F / R Control Button | 5 Key / 4 Key | |
| <input type="checkbox"/> 4 Key | Power Switch, Menu, Select (+,-), | |
| OSD Menu | Brightness, Contrast, H/V Position, Color, Phase, Clock... | |
| Optional | N/A | |

Specifications are subject to change without notice.

All brands or product names are trademarks or registered trademarks of their respective companies.

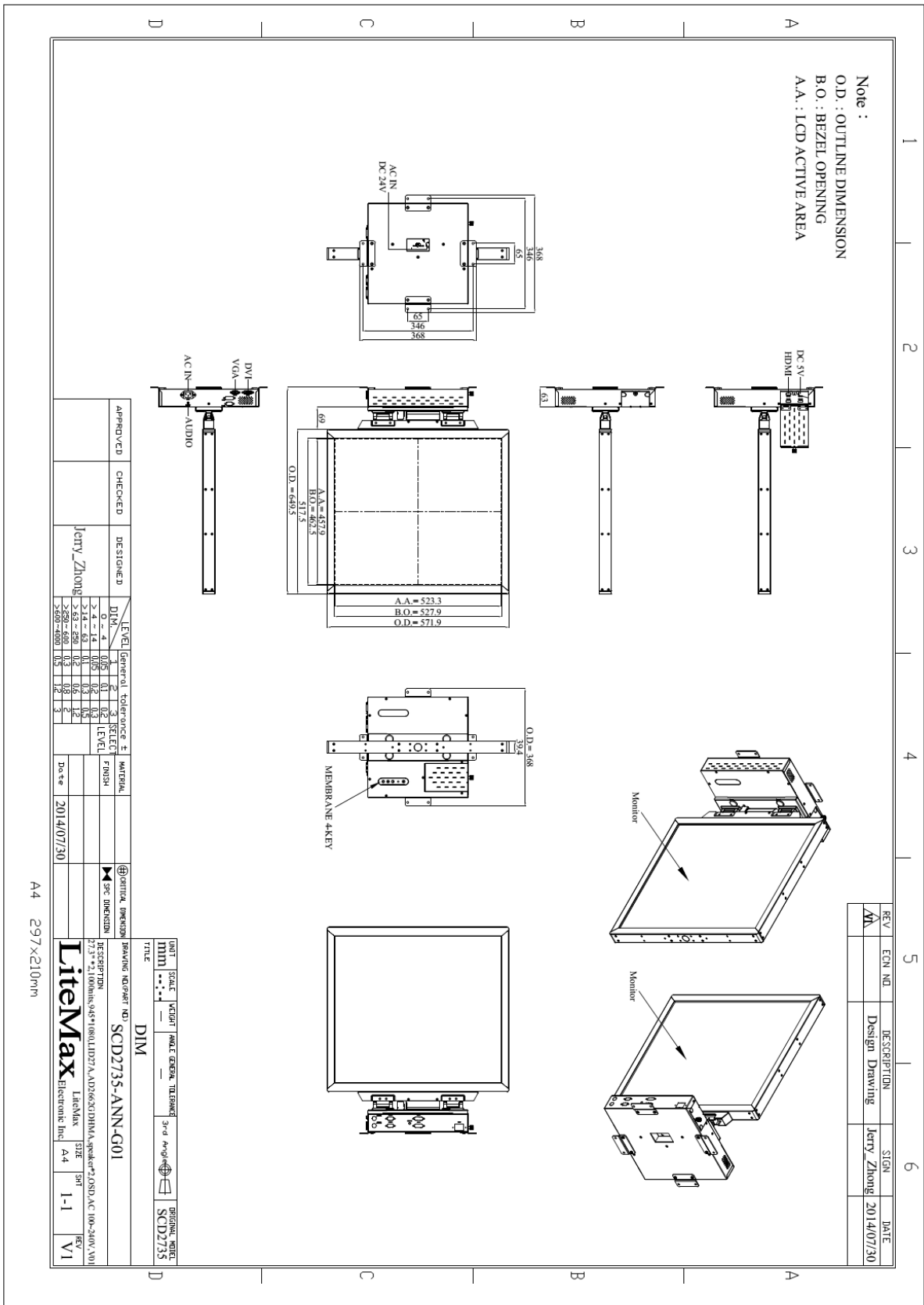
SCD= Dual Panel + LED Driving Board + Control Board



Mechanical Drawing

Outline Dimensions

Unit: mm





Ordering Information

| Model Name | Description |
|-----------------|--|
| SCD2735-ANN-G01 | 27.3"*2,1000nits,945*1080.LID27A,AD2662GDHMA.speaker*2,OSD,AC 100~240V.V01 |
| | |
| | |

Optional Accessories

| Part Number | Description |
|-------------------------|--|
| 810618301010 (Optional) | CABLE.POWER.AC.1830mm.(US Type).3PIN PLUG TO SOCKET.SVT(SPT-2)18AWG 3C BLACK.P. |
| 810618301090 (Optional) | CABLE,POWER,AC,1830mm.(EU Type) 3PIN PLUG TO.SOCKET,H05VV-F 3G.0.75MMSQ BLACK,P |
| 810618301050 (Optional) | CABLE,POWER,AC,1830mm.UK(FUSE) 3PIN PLUG TO.SOCKET,H05VV-F 3C(3G) 0.75MMSQ BLACK,P |
| 810618301170 (Optional) | CABLE.POWER,AC,1830mm. (AU Type) 3PIN PLUG TO 2P SOCKET.LTSA 0.75MMSQ BLACK,P |
| 810618301030 (Optional) | CABLE.POWER.AC.1830mm.(JP Type).2PIN PLUG Y TERMINAL TO. SOCKET.VCTF 3C 0.75MMSQ BLACK,P |
| | |