



product description
 15",1600nits,PCT,Intel Core i5-4570TE,DDR3 SODIMM/4GB,SSD/64GB,RJ45*2,USB-3*2, USB-2*4,COM*2,DVI*1, VGA*1,Audio Jack*2,PS2*1,LS,AOT,WP,AC100~240V

Introduction

Features:

- 1600 nits Sunlight Readable LCD
- Long Life, Low Power Consumption LED Backlight
- Advanced Optical Bonding (AOT)
- 0°C~50°C Operating Temperature
- High Shock & Vibration Resistance
- PCT Multi-Touch Support
- IP65 Fascial Waterproof

Application:

- Marine
- Outdoor Display



Specifications V1

Model Number	NPS1568
LCD Display	
Backlight	15" LED Backlight
Active Display Area	304.128x228.096 mm
Brightness	1600 cd/m2
Resolution	1024x768 (XGA)
Contrast Ratio	1,000:1
Touch Screen	PCT Multi-Touch
Optical	AOT
System	
Processor	Intel Core i5
Chip Set	Intel H81 Express Chipset
Memory	4GB DDR III SODIMM
Ethernet	Realtek 8111F PCIe Gigabit LAN
Storage	64GB SATA 2.5" HDD
I/O Port	RJ45*2,USB-3*2,USB-2*4,COM*2,DVI*1,VGA*1, Audio Jack*2(Mic-in,Line-out), PS2*1(KB&Mouse),Power AC-in x1
BIOS	AMI
Wake on LAN	Yes
Watchdog Timer	1~255 steps programmable
H/W Status Monitor	Support power supply voltages, fan speed and temperature monitoring
Expansion Interface	Mini PCIe (internal)
Power	
Voltage	AC Input: AC 100 ~ 240V ; DC Input (Optional)
Power consumption	55W
Mechanical	
IP Rating	Fascial waterproof to IP65 standards when console mounted.
Construction	Aluminum Alloy Chassis
Mounting	Panel (Flush) Mount , VESA75/VESA100, Stand Mount
Dimension	391.5mm (W) x 350.35mm(H) x 92.2mm(D)
Net Weight	4.7kg
Environmental	
Operating Temperature	0°C~50°C
Storage Temperature	-10°C ~ 60°C
Operating Humidity	5~95% @ 40°C, non-condensing
Certification	Designed to meet CE/FCC

Specifications are subject to change without notice.

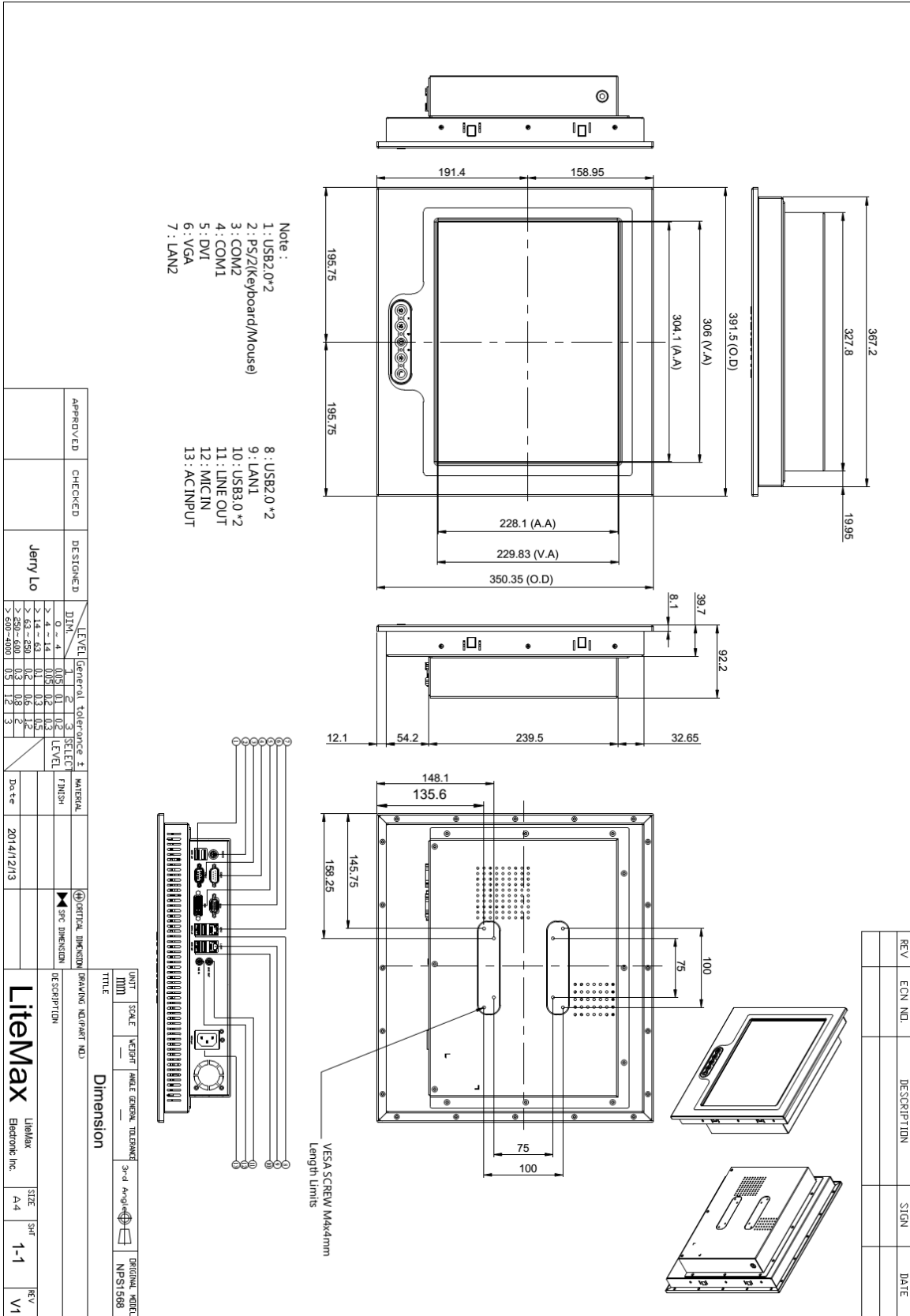


All brands or product names are trademarks or registered trademarks of their respective companies.

Mechanical Drawing

Outline Dimensions

Unit : mm



APPROVED	CHECKED	DESIGNED	DATE
		Jerry Lo	2014/12/13

LEVEL	General	tolerance ±
0 - 4	1	0.05
> 4 - 14	2	0.1
> 14 - 63	3	0.2
> 63 - 250	4	0.3
> 250 - 630	5	0.5
> 630 - 1000	6	0.8
> 1000 - 2000	7	1.2
> 2000 - 4000	8	2
> 4000 - 6000	9	3

UNIT	SCALE	WEIGHT	ANGLE	GENERAL	INTERMARK	3rd Angle	ORIGINAL MODEL
MM	1:1						NPS1568

TITLE	DRAWING NO./PART NO.
Dimension	

DESCRIPTION	DATE
Litemax	2014/12/13

REV	ECN NO.	DESCRIPTION	SIGN	DATE



Ordering Information

Part Number	Description
NPS1568-ETA-A01	15", 1600nits, PCT, Intel Core i5-4570TE, DDR3 SODIMM/4GB, SSD/64GB, RJ45*2, USB-3*2, USB-2*4, COM*2, DVI*1, VGA*1, Audio Jack*2, PS2*1, LS, AOT, WP, AC100~240V

Optional Accessories

Part Number	Description
321038156800	Print, Label, Serial, NPS, 1568.V0, Microsoft Windows 7 Professional for Embedded Systems, 42C-00022, P
810618301010	CABLE.POWER.AC.1830mm USA type
810618301090	CABLE,POWER,AC,1830mm Europe type
810618301050	CABLE.POWER.AC.1830mm UK type
810618301170	CABLE.POWER,AC,1830mm Australia type
810618301031	CABLE.POWER.AC.1830mm Japan type