



DLF1768(WT) / DLH1768(WT)

17" TFT LCD, LED Backlight 1600nits,SXGA(1280x1024)

17" TFT LCD panel, built-in 1600 nits high bright for sunlight readable LCD display, high transmittance color filter, high transmission polarizing plates, Low Power Consumption, suitable for kiosk, advertising, POS, marine, transportation, gaming, studio display, gas pump.

Key Features

- Sunlight Readable
- LED Backlight
- SXGA(1280x1024) High Definition
- High Shock & Vibration Resistance
- Low Power Consumption
- High Uniformity
- Low EMI Noise
- Wide Dimming
- Wide Operation temperature
- Life Expectancy



Specifications

V2

Model No.	DLF1768(WT)	DLH1768(WT)
Description	17" TFT LCD, LED Backlight 1600nits,SXGA(1280x1024)	
Display Area (mm)	337.9(H) x 270.3(V) mm	
Brightness	1600 cd/m ²	
Resolution	1280x1024 (SXGA)	
Contrast Ratio	1000 : 1	
Pixel Pitch (mm)	0.264(H) x 0.264(V)	
Viewing Angle	+85°~ -85°(H), +80°~ -80°(V)	
Display Colors	16.7M	
Response Time (Typical)	30ms	
Power Consumption	34.05W	
Dimensions (mm)	358.5x296.5x18.9mm	
Weight (Net)	2.0kg	
LED Driving Board	LID 17A09	
Control Board (Optional)	<input type="checkbox"/> AD6038GA <input type="checkbox"/> AD6038GD <input type="checkbox"/> AD2662GDHVA <input type="checkbox"/> AD2662GDVAR <input type="checkbox"/> AD2662GDHMVAR	
<input type="checkbox"/> AD6038GA	VGA+Audio	
<input type="checkbox"/> AD6038GD	VGA+DVI	
<input type="checkbox"/> AD2662GDHVA	VGA+CVBS+S-Video+Audio (Optional DVI / HDMI)	
<input type="checkbox"/> AD2662GDVAR	VGA+DVI (Optional S-Video/ Component / Audio)	
<input type="checkbox"/> AD2662GDHMVAR	VGA (Optional DVI / HDMI / S-Video/ Component / Audio)	
F / R Control Button	<input type="checkbox"/> 5 Key <input type="checkbox"/> 4 Key	
<input type="checkbox"/> 5 Key	Power Switch, Menu, Select (+,-), Auto	
<input type="checkbox"/> 4 Key	Power Switch, Menu, Select (+,-),	
OSD Menu	Brightness, Contrast, H/V Position, Color, Phase, Clock...	
Optional	<input type="checkbox"/> AOT <input type="checkbox"/> Touch Screen	

Specifications are subject to change without notice.

All brands or product names are trademarks or registered trademarks of their respective companies.

DLF= Panel+LED Driving Board

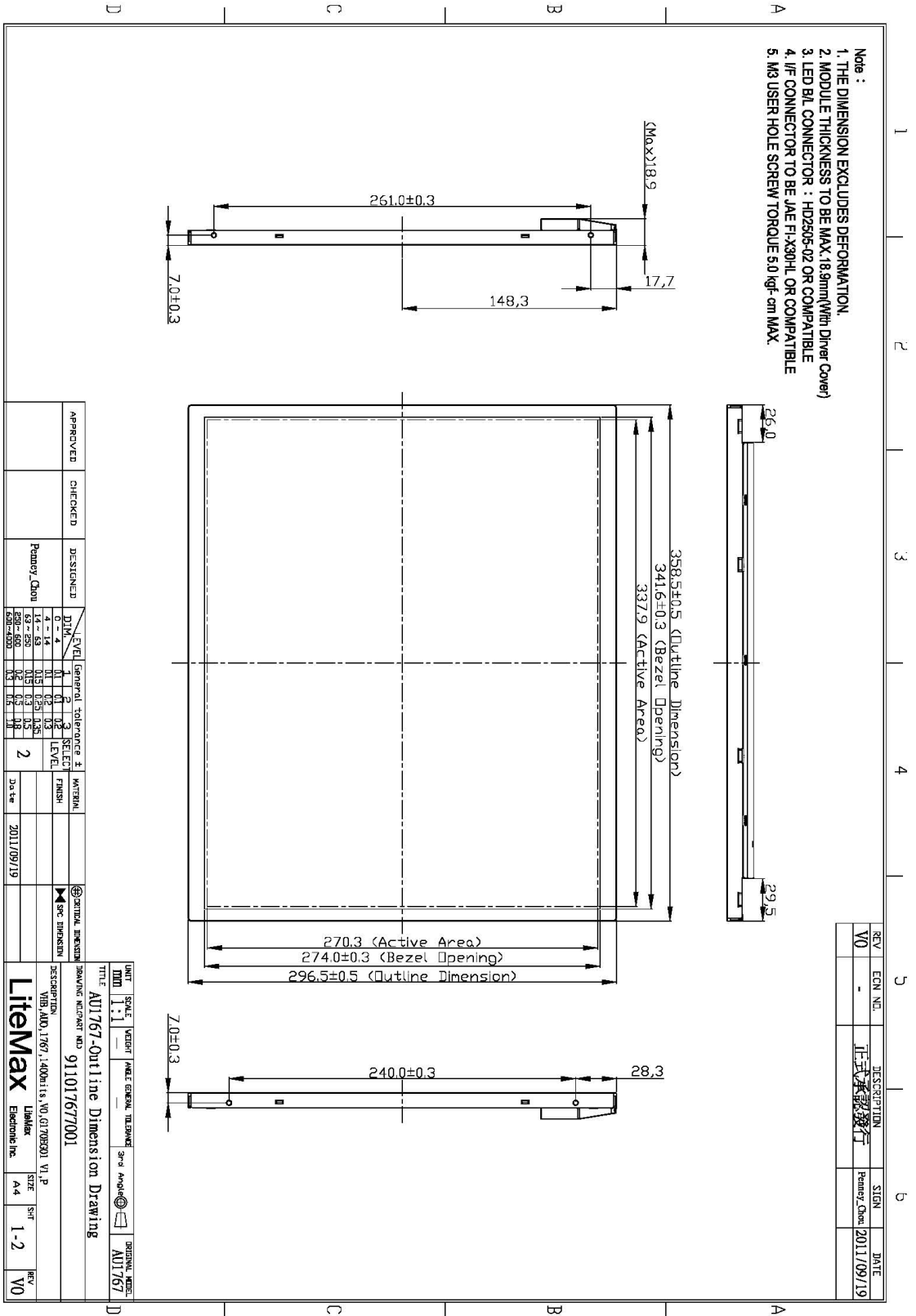
DLH= Panel+LED Driving Board+Control Board



Mechanical Drawing

Outline Dimensions

Unit:mm



APPROVED	CHECKED	DESIGNED	LEVEL	GENERAL TOLERANCE	SELECT	FINISH	DATE
		Peemay_Chou	0-4	0.1	0.2	0.3	2011/09/19
			4-14	0.1	0.2	0.3	
			15-25	0.15	0.25	0.35	
			26-50	0.2	0.3	0.4	
			51-100	0.3	0.5	0.6	
			101-200	0.4	0.6	0.8	
			201-400	0.5	0.8	1.0	
			401-600	0.6	1.0	1.2	
			601-800	0.8	1.2	1.5	
			801-1000	1.0	1.5	2.0	

UNIT	SCALE	VECTER	FRAME GENERAL TOLERANCE	3rd Party	ORIGINAL MARK
MM	1:1				AU1767

TITLE: AU1767-Outline Dimension Drawing

DESCRIPTION: VIB. ADO.1767.1400x16.5 V0.6170930 V1.P

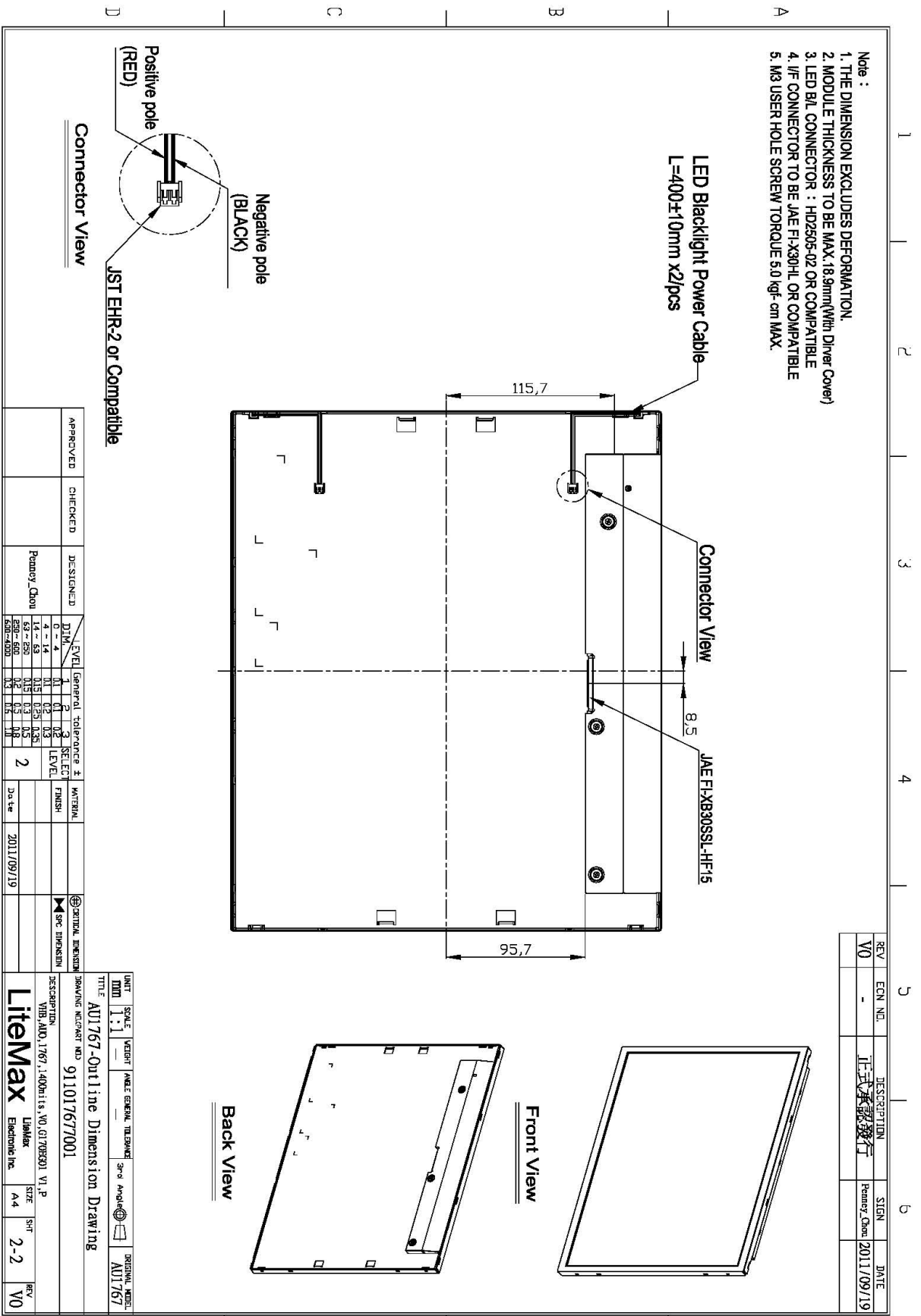
LIBRARY: Litemax

SIZE: A4

SH: 1-2

REV: V0

A4 297X210mm



A4 297x210mm



Ordering Information

Part Number	Description
DLF1768-ENN-A11	17",1600nits,SXGA,LID17A02,WT,V01(5 in 1)
DLH1768-ENN-G11	17",1600nits,SXGA,LID17A02,AD2662GD,WT,V01(5 in 1)

Optional Accessories

Part Number	Description
840612051210	ADAPTER,AC/DC,12V/5.4A,65W,Atech OEM A065112-TDx.4P SLIDING CAP,P
810618301010	CABLE.POWER.AC.1830mm USA type
810618301090	CABLE.POWER.AC,1830mm Europe type
810618301050	CABLE.POWER.AC.1830mm UK type
810618301170	CABLE.POWER.AC,1830mm Australia type
810618301030	CABLE.POWER.AC.1830mm Japan type