



ITRP-2155-EHL1-ZG00-2001
21.5" TFT LCD, LED Backlight 1600nits, FHD(1920x1080)

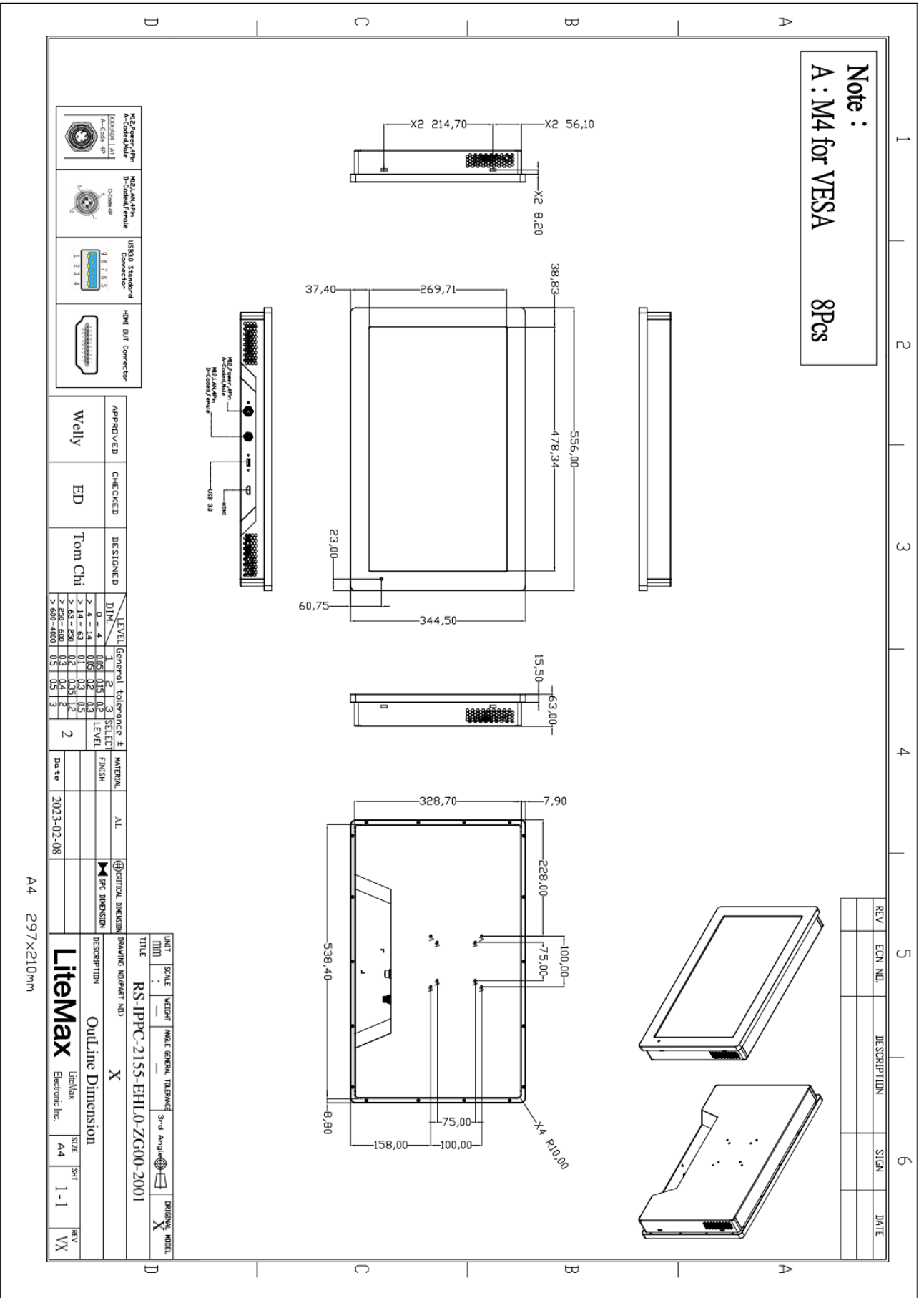
The **ITRP-2155-EHL1-ZG00-2001** is a 21.5inch industrial grade sunlight readable LCD, with high brightness **1000** nits and high color saturation, it produce sharp images, crisp text and lifelike colors. The Durapixel LED backlight technology ensures high reliability and low power consumption, suitable for outdoor application, kiosk, factory automation, military, transportation and gaming application

- Key Features**
- High Brightness 1000 nits
 - Sunlight Readable
 - Celeron® J6412 (2.0GHz/2.6GHz, QC, 16EU, 10W)
 - Low Power Consumption
 - Wide View Angle
 - 10mm P4 Glass
 - EN50155 & EN45545
 - BL MTBF: 100,000 hours



Specifications

Model Name	ITRP-2155-EHL1-ZG00-2001
Description	21.5" TFT LCD, LED Backlight 1000 nits, 1920x1080
Screen Size	21.5"
Display Area (mm)	476.06(H) x 267.79(V)
Brightness	1000 cd/m ²
Resolution	1920x1080
Aspect Ratio	16 : 9
Contrast Ratio	3000 : 1
Pixel Pitch (mm)	0.24795(H) x 0.24795(V)
Viewing Angle	178°(H), 178°(V)
Input Interface	HDMIx1、USB3.0x1、LAN(M12)x1、Power(M12)x1
CPU	Celeron® J6412 (2.0GHz/2.6GHz, QC, 16EU, 10W)
OS	Win10 IoT、Linux
RAM	4GB DDR4
Storage	128GB M.2 SSD
Light sensor	Auto Light Sensor
Input Power	DC 17~31V \34~63V/ 67~143V input
Glass	10mm P4 Glass
Power Consumption	50W
IP Level	Front IP65
Dimensions (mm)	556 x 344.5 x 63 mm
Weight (Net)	10.5 KG
Mounting	Wall Mount、VESA 75x75
Operating Temperature	-25 °C ~ 55 °C
Storage Temperature	-25 °C ~ 60 °C
Certification	EN50155、EN45545



	HDMI Standard Connector
	USB Standard Connector
	D-sub 9 Pin
	RJ45 10/100/1000 Mbps
	Audio 3.5mm

APPROVED	CHECKED	DESIGNED	LEVEL	General	Tolerance	±
Welly	ED	Tom Chi	D1H	4	0.15	0.3
			D2	4-14	0.05	0.2
			D3	14-63	0.1	0.3
			D4	63-250	0.2	0.5
			D5	250-500	0.3	0.4
			D6	500-1000	0.5	0.5
					2	

UNIT	SCALE	WEIGHT	MATERIAL	AL	DESCRIPTION
MM					RS-IPPC-2155-EHL0-ZG00-2001
TITLE					

A4 297x210mm

REV	ECN NO	DESCRIPTION	SIGN	DATE

DESCRIPTION	OUTLINE DIMENSION
LiteMax	Outline Dimension
Electronic Inc.	Electronic Inc.
SIZE	SIZE
A4	A4
SHT	SHT
1-1	1-1
REV	REV
VX	VX



Specifications are subject to change without notice.

All brands or product names are trademarks or registered trademarks of their respective companies.

Ordering Information

Part Number	Description
ITRP-2155-EHL1-ZG00-2001	21. 5",1000nits,1920x1080,LID21C,P4 10mm glass,Intel Celeron J6412,4GB DDR4,128GB SSD,1HDMI/1USB3. 0 ,M12 for 1LAN/1PWR,EN50155,DC17~31V input
ITRP-2155-EHL1-ZG01-2001	21. 5",1000nits,1920x1080,LID21C,P4 10mm glass,Intel Celeron J6412,4GB DDR4,128GB SSD,1HDMI/1USB3. 0 ,M12 for 1LAN/1PWR,EN50155,DC 34~63V input
ITRP-2155-EHL1-ZG02-2001	21. 5",1000nits,1920x1080,LID21C,P4 10mm glass,Intel Celeron J6412,4GB DDR4,128GB SSD,1HDMI/1USB3. 0 ,M12 for 1LAN/1PWR,EN50155,DC67~143V input

Optional Accessories

Part Number	Description