



DLF/DLH1068-E 10.4" TFT LCD, 2000 nits LED Backlight, 800x600

The DLF/DLH1068-E is a 10.4 inch industrial grade sunlight readable LCD, with high brightness 2000 nits, it produce sharp images, crisp text and lifelike colors. The Durapixel LED backlight technology ensures high reliability and low power consumption, suitable for outdoor application, kiosk, factory automation, military, transportation and gaming application.

Key Features

- 10.4" sunlight readable, high brightness
- Resolutions: 800x600
- Industry leading LED Backlight
- Aspect ratio of 4:3
- Wide temperature (-20°C~70°C)
- Low power consumption
- BL MTBF: 70,000 hours



Specifications

Model Name	DLF/DLH1068-E
Description	10.4" TFT LCD, 2000nits LED Backlight, 800x600
Screen Size	10.4"
Display Area (mm)	211.2 (H) x 158.4(V) mm
Brightness	2000 cd/m ²
Resolution	800x600
Aspect Ratio	4:3
Contrast Ratio	400 : 1
Pixel Pitch (mm)	0.264(H) x 0.264(V)
Pixel Pre Inch (PPI)	96
Viewing Angle	130°(H),110°(V)
Color Saturation (NTSC)	55%
Display Colors	262K
Response Time (Typical)	25ms
Panel Interface	LVDS
Input Interface	VGA, DVI-D
Input Power	DC 12V
Power Consumption	6.7W(11.3W with AD Board)
OSD Key	4 Keys (Power Switch, Menu, +, -)
OSD Control	Brightness, Color, Contrast, H/V Position...etc
Dimensions (mm)	236 x 176.9 x 6.3 (T)
Bezel Size(U/B/L/R)	6.3/8.65/11.5/9.5 mm
Weight (Net)	0.8 kg
Operating Temperature	-20°C ~ 70°C
Storage Temperature	-30°C ~ 80°C

DLF= Panel + LED Driving Board

DLH= Panel + LED Driving Board + AD Control Board

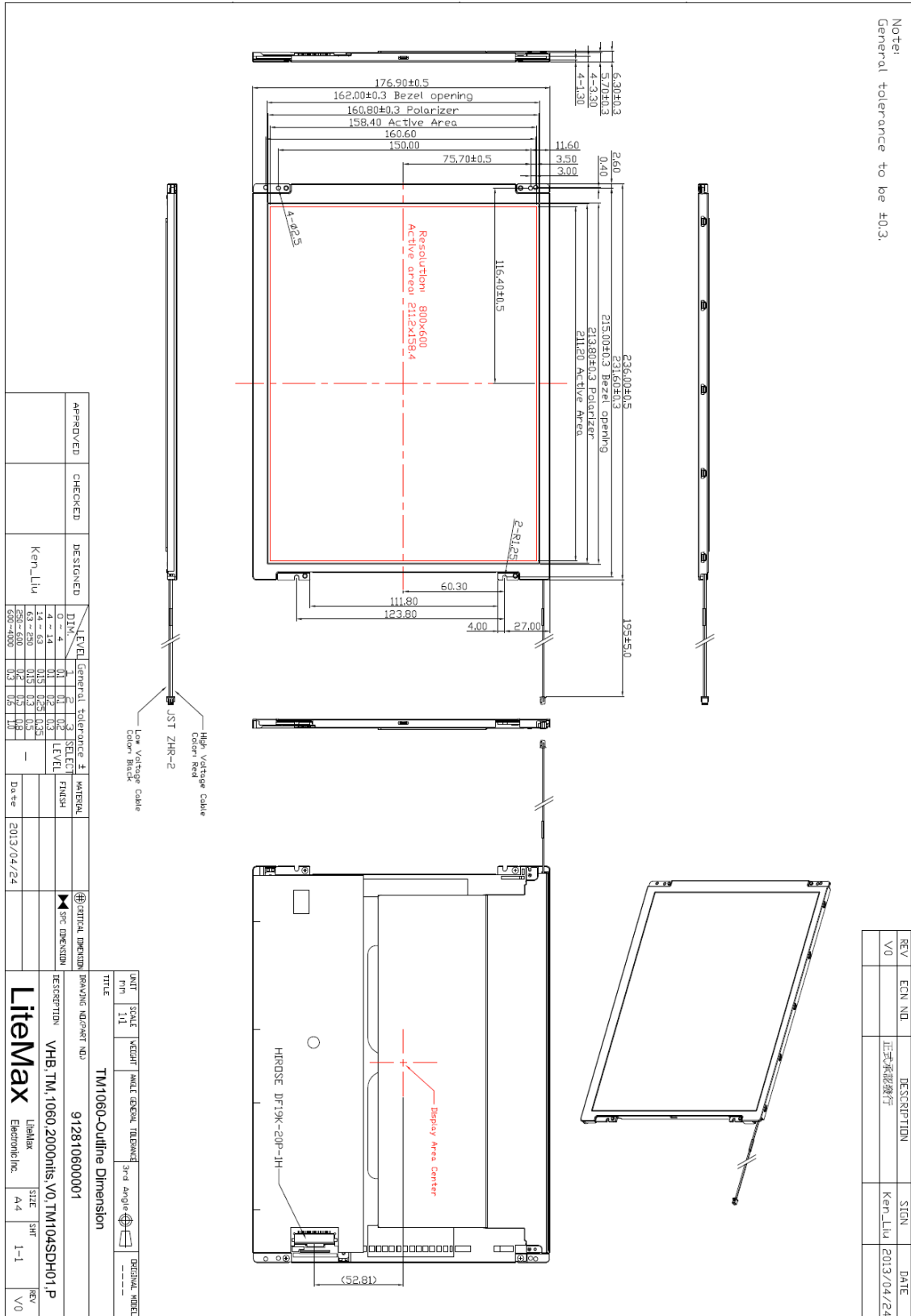
Specifications are subject to change without notice.
All brands or product names are trademarks or registered trademarks of their respective companies.



Mechanical Drawing

Outline Dimensions

Unit:mm





Ordering Information

Part Number	Description
DLF1068-ENN-A51	10.4",2000nits,800*600.LID10A,5-in-1,V1
DLH1068-ENN-I51	10.4",2000nits,800*600,LID10A,AD6038GD,5-in-1,V1

Optional Accessories

Part Number	Description
840612051100	ADAPTER,12V,5A,60W,EA1050A,P
810618301010	CABLE,POWER,AC,1830mm USA type
810618301090	CABLE,POWER,AC,1830mm Europe type
810618301050	CABLE,POWER,AC,1830mm UK type
810618301170	CABLE,POWER,AC,1830mm Australia type
810618301030	CABLE,POWER,AC,1830mm Japan type