



SSD1505-E V2

15" Resizing LCD, 1000 nits LED backlight, 1280 x 242 ultra-wide aspect ratio 16:3

The SSD1505-E is a 15 inch color TFT-LCD display with special aspect ratio 16:3 and wide resolution 1280 x 242. It is Litemax's Spanpixel series product which designed for high brightness 1000 nits with power efficiency LED backlight. It provides LCD panel with specific aspect ratios and sunlight readable for digital signage, public transportation, exhibition hall, department store, and vending machine.

Key Features

- Resizing LCD
- Ultra Wide Screen (16 : 3)
- Sunlight Readable
- LED Backlight
- High Brightness 1000 nits
- Low Power Consumption
- High Uniformity (90%)
- Wide Dimming
- Slim Bezel
- Life Expectancy (70,000hrs)



Specifications

Model Name	SSD1505-E V2
Description	15" Resizing LCD, 1000 nits LED backlight, 1280x242
Screen Size	15"
Display Area (mm)	376.3(H) x 71.1(V)
Brightness	1000 cd/m ²
Resolution	1280x242
Aspect Ratio	16 : 3
Contrast Ratio	1350 : 1
Pixel Pitch (mm)	0.294(H) x 0.294(V)
Pixel Per Inch (PPI)	87
Viewing Angle	170°(H),160°(V)
Color Saturation (NTSC)	84%
Display Colors	16.7M
Response Time (Typical)	5ms
Panel Interface	LVDS
Video Interface	VGA,HDMI
Input Power	DC12V
Power Consumption	8.8W
OSD Key	4 Keys (Power Switch, Menu, +, -)
OSD Control	Brightness, Color, Contrast, Auto Turing, H/V Position...etc
Dimensions (mm)	410 x 108.2 x 39.3
Bezel Size(U/B/L/R)	18.5/18.6/16.9/16.9
Mounting (mm)	75x75
Weight (Net)	1.25 kg
Operating Temperature	0 °C ~ 50 °C
Storage Temperature	-20 °C ~ 60 °C

SSD= Panel + LED Driving Board + AD Control Board + Housing

Specifications are subject to change without notice.

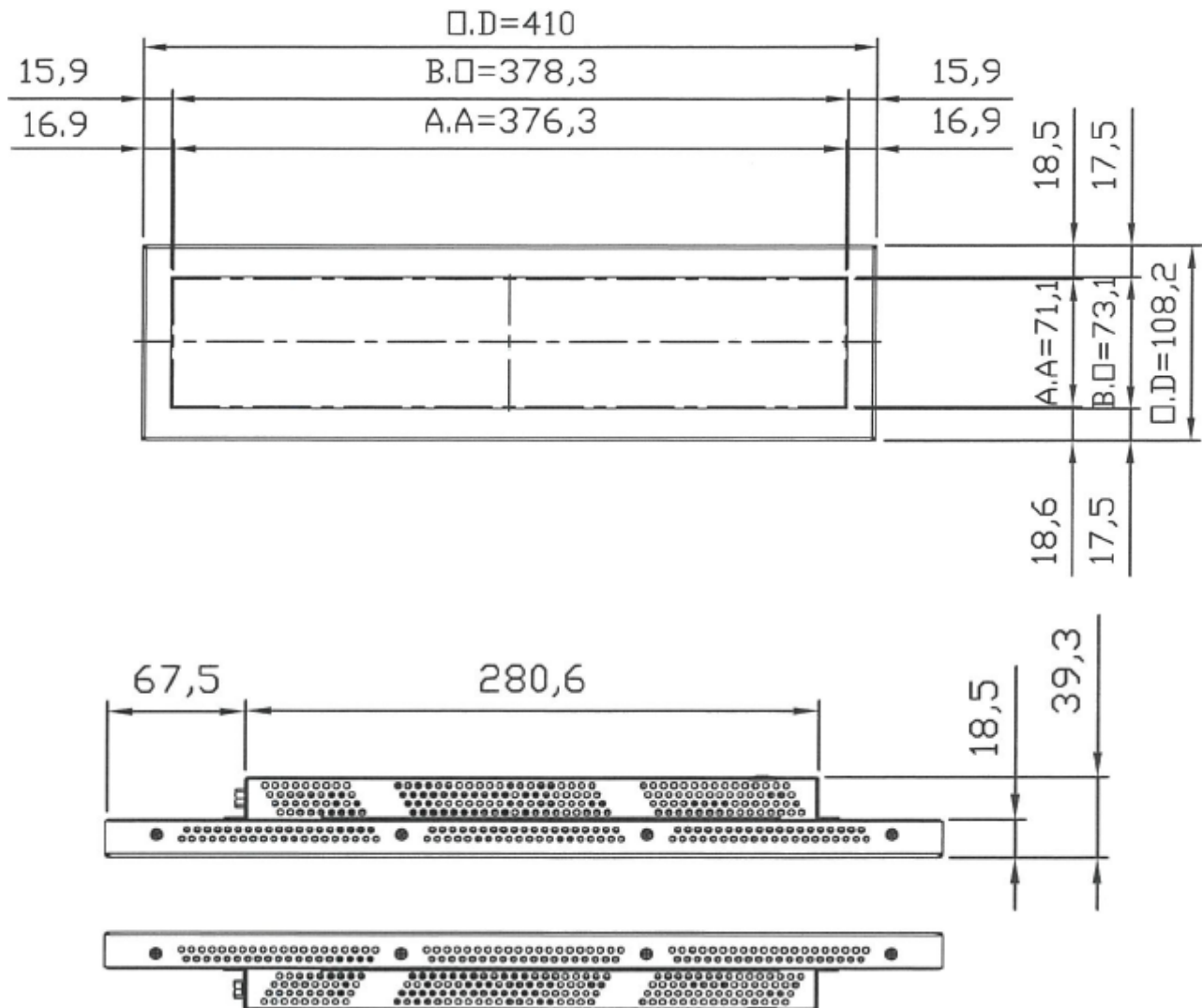
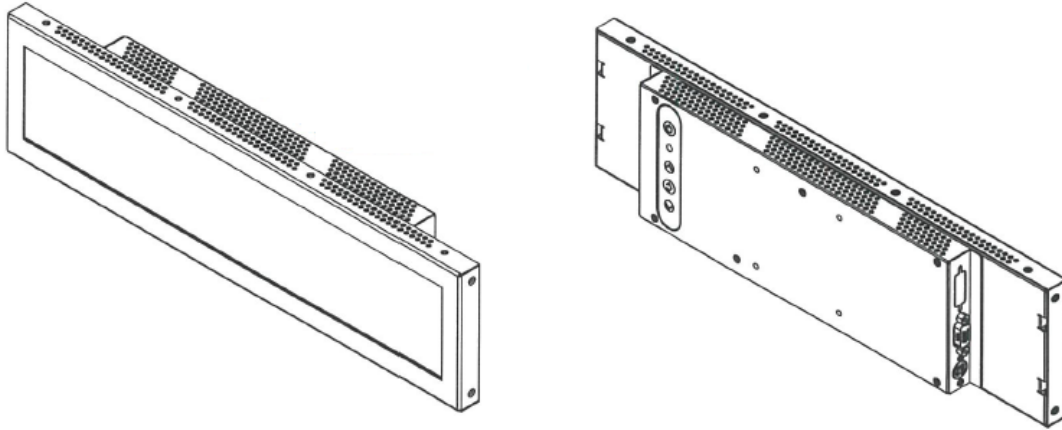
All brands or product names are trademarks or registered trademarks of their respective companies.

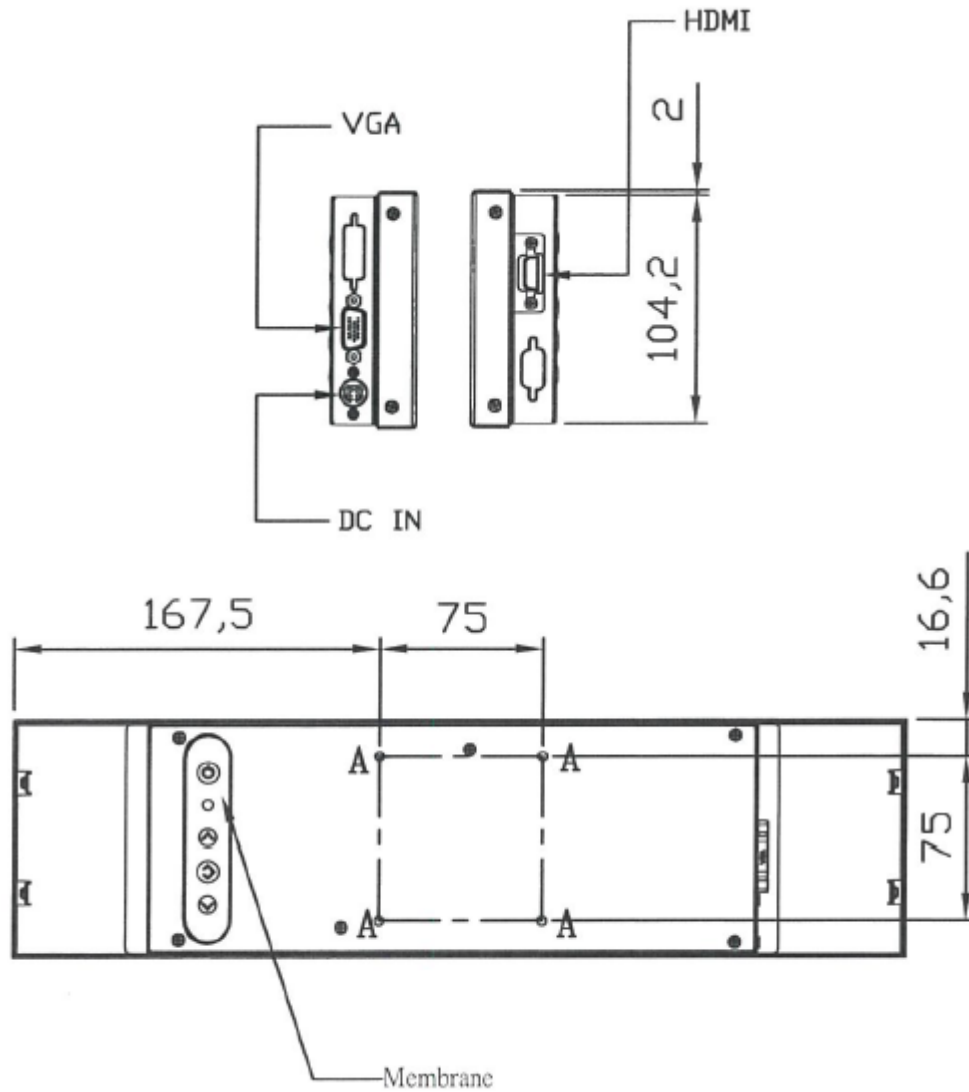


Mechanical Drawing

Outline Dimensions

Unit: mm





Note:

1.O.D=Outline Dimension.

2.A.A=LCD Active Area.

3.B.O=Bezel Opening

4.A=4-M4_USER HOLE_MAX. DEPTH=5mm



Ordering Information

Part Number	Description
SSD1505-ENB-Q11	15", 1000nits, 1280x242, LID15A, AD8891G-DH, O/B, DC12V, V2

Optional Accessories

Part Number	Description
810618301010	CABLE.POWER.AC.1830mm USA type
810618301090	CABLE,POWER,AC,1830mm Europe type
810618301050	CABLE.POWER.AC.1830mm UK type
810618301170	CABLE.POWER,AC,1830mm Australia type
810618301031	CABLE.POWER.AC.1830mm Japan type

By Customer Request

Glass	Tempered glass, AR coating.....
Touch	PCT, SCT, Resistive.....