



## SSF/SSH1505-E V2

### 15" Resizing LCD, 1000 nits LED backlight, 1280 x 242 ultra-wide aspect ratio 16:3

The SSF/SSH1505-E is a 15 inch color TFT-LCD display with special aspect ratio 16:3 and wide resolution 1280 x 242. It is Litemax's Spanpixel series product which designed for high brightness 1000 nits with power efficiency LED backlight. It provides LCD panel with specific aspect ratios and sunlight readable for digital signage, public transportation, exhibition hall, department store, and vending machine.

#### Key Features

- Resizing LCD
- Ultra Wide Screen (16 : 3)
- Sunlight Readable
- LED Backlight
- High Brightness 1000 nits
- Low Power Consumption
- High Uniformity (90%)
- Wide Dimming
- Slim Bezel
- Life Expectancy (70,000hrs)



### Specifications

Model Name	SSF1505-E / SSH1505-E V2
Description	15" Resizing LCD, 1000 nits LED backlight, 1280x242
Screen Size	15"
Display Area (mm)	376.32(H) x 71.12(V)
Brightness	1000 cd/m <sup>2</sup>
Resolution	1280x242
Aspect Ratio	16 : 3
Contrast Ratio	1350 : 1
Pixel Pitch (mm)	0.294(H) x 0.294(V)
Pixel Per Inch (PPI)	87
Viewing Angle	170°(H),160°(V)
Color Saturation (NTSC)	84%
Display Colors	16.7M
Response Time (Typical)	5ms
Panel Interface	LVDS
Video Interface	VGA,DVI-D,HDMI
Input Power	DC12V
Power Consumption	4.8W (with AD Board 8.8W)
OSD Key	4 Keys (Power Switch, Menu, +, -)
OSD Control	Brightness, Color, Contrast, Auto Turing, H/V Position...etc
Dimensions (mm)	396x 94.2 x 12.2
Bezel Size(U/B/L/R)	11.5/11.5/9.9/9.9
Weight (Net)	0.83 kg
Operating Temperature	0 °C ~ 50 °C
Storage Temperature	-20 °C ~ 60 °C

SSF= Panel + LED Driving Board

SSH= Panel + LED Driving Board + AD Control Board

*Specifications are subject to change without notice.*

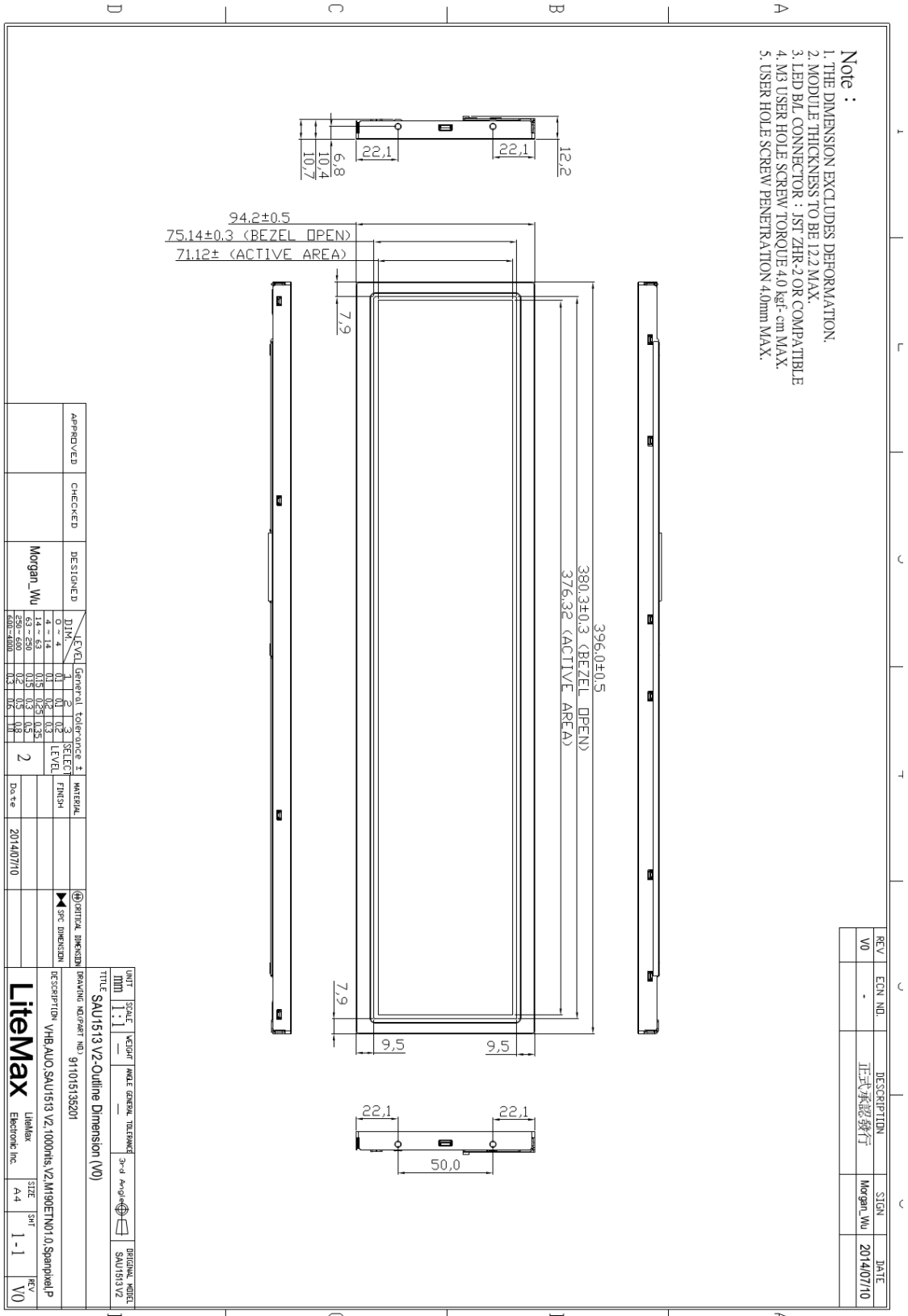
*All brands or product names are trademarks or registered trademarks of their respective companies.*



Mechanical Drawing

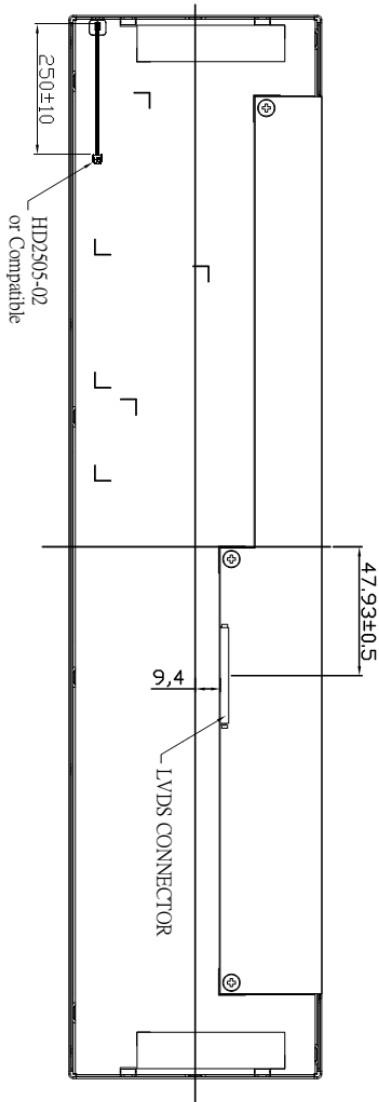
Outline Dimensions

Unit: mm





- Note :**
1. THE DIMENSION EXCLUDES DEFORMATION.
  2. MODULE THICKNESS TO BE 12.2 MAX.
  3. LED B/L CONNECTOR : JST ZHR-2 OR COMPATIBLE
  4. M3 USER HOLE SCREW TORQUE 4.0 kgf·cm MAX.
  5. USER HOLE SCREW PENETRATION 4.0mm MAX.



REV	ECN NO.	DESCRIPTION	SIGN	DATE
V0	-	正式承認發行	Morgan_Wu	2014/07/10

APPROVED	CHECKED	DESIGNED	LEVEL	General tolerance ±	SELECT	MATERIAL	FINISH	DATE
		Morgan_Wu	1	0.1	1			2014/07/10
			2	0.15	2			
			3	0.2	3			
			4	0.3	4			
			5	0.5	5			
			6	0.8	6			
			7	1.0	7			
			8	1.5	8			
			9	2.0	9			
			10	3.0	10			
			11	4.0	11			
			12	5.0	12			
			13	6.0	13			
			14	8.0	14			
			15	10.0	15			

UNIT	SCALE	WEIGHT	ANGLE	GENERAL TOLERANCE	3rd ANGLE	ORIGINAL MODEL
mm	1:1					SAU1513 V2
TITLE SAU1513 V2-Outline Dimension (V0)						
DRAWING NO./PART NO. 91101513S201						
DESCRIPTION VHB_AUO_SAU1513 V2_1000mils_V2.M190ET.N01.0.Spanpixel.P						
LibMax			SIZE	SHT	REV	
Electronic Inc.			A4	1-1	V0	



### Ordering Information

Part Number	Description
SSF1505-ENN-A11	15", 1000nits, 1280x242, LID15A, V02
SSH1505-ENN-Q11	15", 1000nits, 1280x242, LID15A, AD8891G-D, DC12V, V2
SSH1505-ENN-Q12	15", 1000nits, 1280x242, LID15A, AD8891G-DH, DC12V, V2

### Optional Accessories

Part Number	Description
840612051212	ADAPTER, AC/DC, 12V/5A, 60W, Power-Din-4P, CWT, G99-ABF060F-N022, Efficiency-level-6, R
810618301010	CABLE.POWER.AC.1830mm USA type
810618301090	CABLE, POWER, AC, 1830mm Europe type
810618301050	CABLE.POWER.AC.1830mm UK type
810618301170	CABLE.POWER, AC, 1830mm Australia type
810618301031	CABLE.POWER.AC.1830mm Japan type

### By Customer Request

Glass	Tempered glass, AR coating.....
Touch	PCT, SCT, Resistive.....