



DLF1975 / DLH1975

19" LCD Display, LED Backlight 1000nits,SXGA(1280x1024)

19" TFT LCD panel, built-in 1000 nits high bright for sunlight readable LCD display, high transmittance color filter, high transmission polarizing plates, Low Power Consumption, suitable for kiosk, advertising, POS, marine, transportation, gaming, studio display, gas pump.

Key Features

- Sunlight Readable
- LED Backlight
- SXGA(1280x1024) High Definition
- High Shock & Vibration Resistance
- Low Power Consumption
- High Contrast Ratio (2000:1)
- Wide Viewing Angle (178°(H), 178°(V))
- High Uniformity
- Low EMI Noise
- Wide Dimming
- Life Expectancy



Specifications

V1

Model No.	DLF1975 V2	DLH1975 V2
Description	19" TFT LCD, LED Backlight 1000nits,SXGA(1280x1024)	
Display Area (mm)	376.32(H) x 301.06 mm	
Brightness	1000 cd/m ²	
Resolution	1280x1024 (SXGA)	
Contrast Ratio	2000 : 1	
Pixel Pitch (mm)	0.294(H) x 0.294(V)	
Viewing Angle	+89°~-89°(H), +89°~-89°(V)	
Display Colors	16.7M	
Response Time (Typical)	28ms	
Power Consumption	32w	38w
Dimensions (mm)	396x324x13mm	
Weight (Net)	TED	2.5Kg
LED Driving Board	LID19A	
Control Board (Optional)	<input type="checkbox"/> AD5621GA <input type="checkbox"/> AD5621GD <input type="checkbox"/> AD5766GDVA <input type="checkbox"/> AD2662GDVAR	
<input type="checkbox"/> AD5621GA	VGA+Audio	
<input type="checkbox"/> AD5621GD	VGA+DVI	
<input type="checkbox"/> AD5766GDVA	VGA+CVBS+S-Video+Audio (Optional DVI / Component)	
<input type="checkbox"/> AD2662GDVAR	VGA+DVI (Optional S-Video/ Component / Audio)	
F / R Control Button	<input type="checkbox"/> 5 Key <input type="checkbox"/> 4 Key	
<input type="checkbox"/> 5 Key	Power Switch, Menu, Select (+,-), Auto	
<input type="checkbox"/> 4 Key	Power Switch, Menu, Select (+,-),	
OSD Menu	Brightness, Contrast, H/V Position, Color, Phase, Clock...	
Optional	<input type="checkbox"/> AOT <input type="checkbox"/> Touch Screen	

Specifications are subject to change without notice.
All brands or product names are trademarks or registered trademarks of their respective companies.

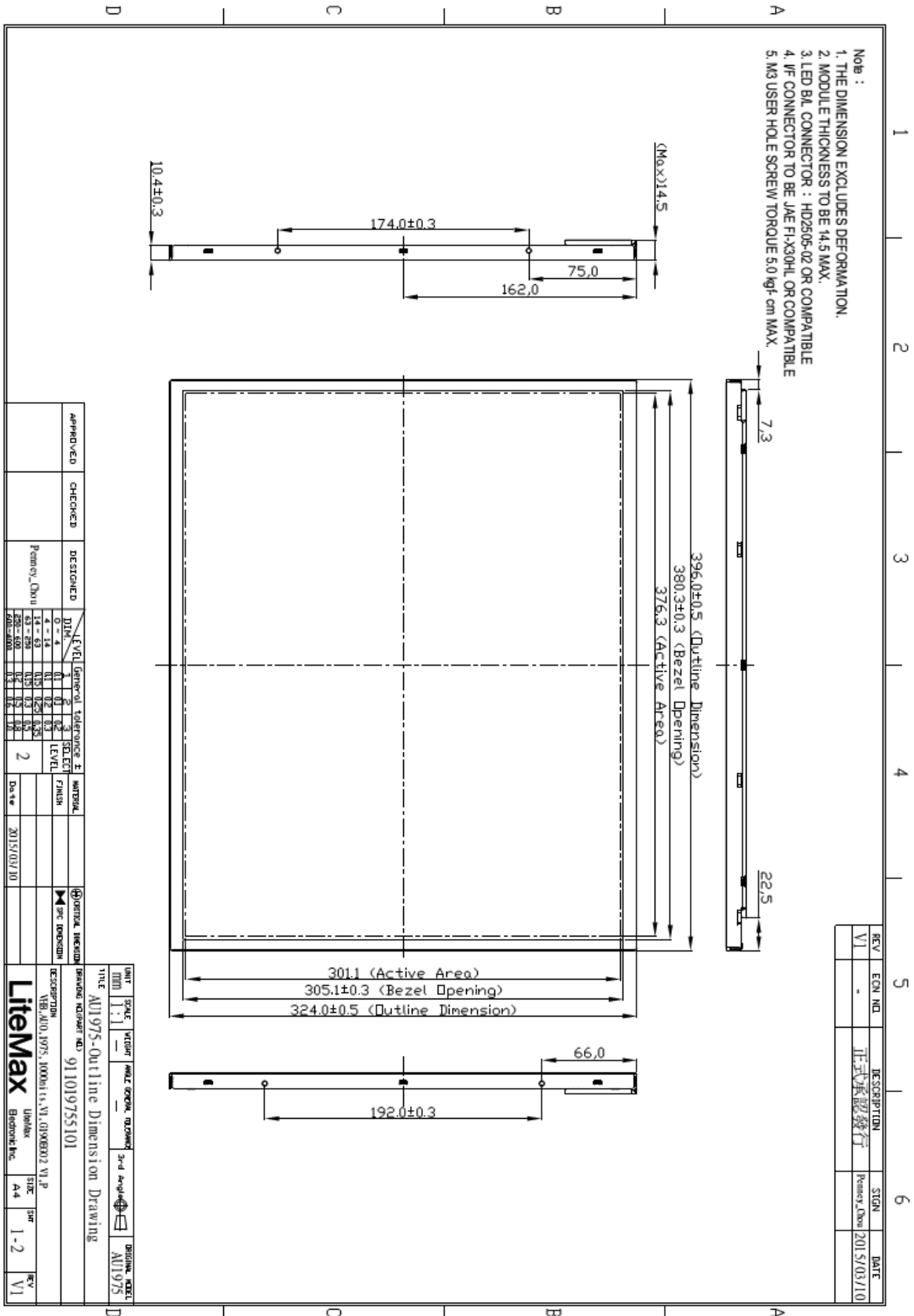
DLF= Panel+LED Driving Board
DLH= Panel+LED Driving Board+Control Board



Mechanical Drawing

Outline Dimensions

Unit:mm



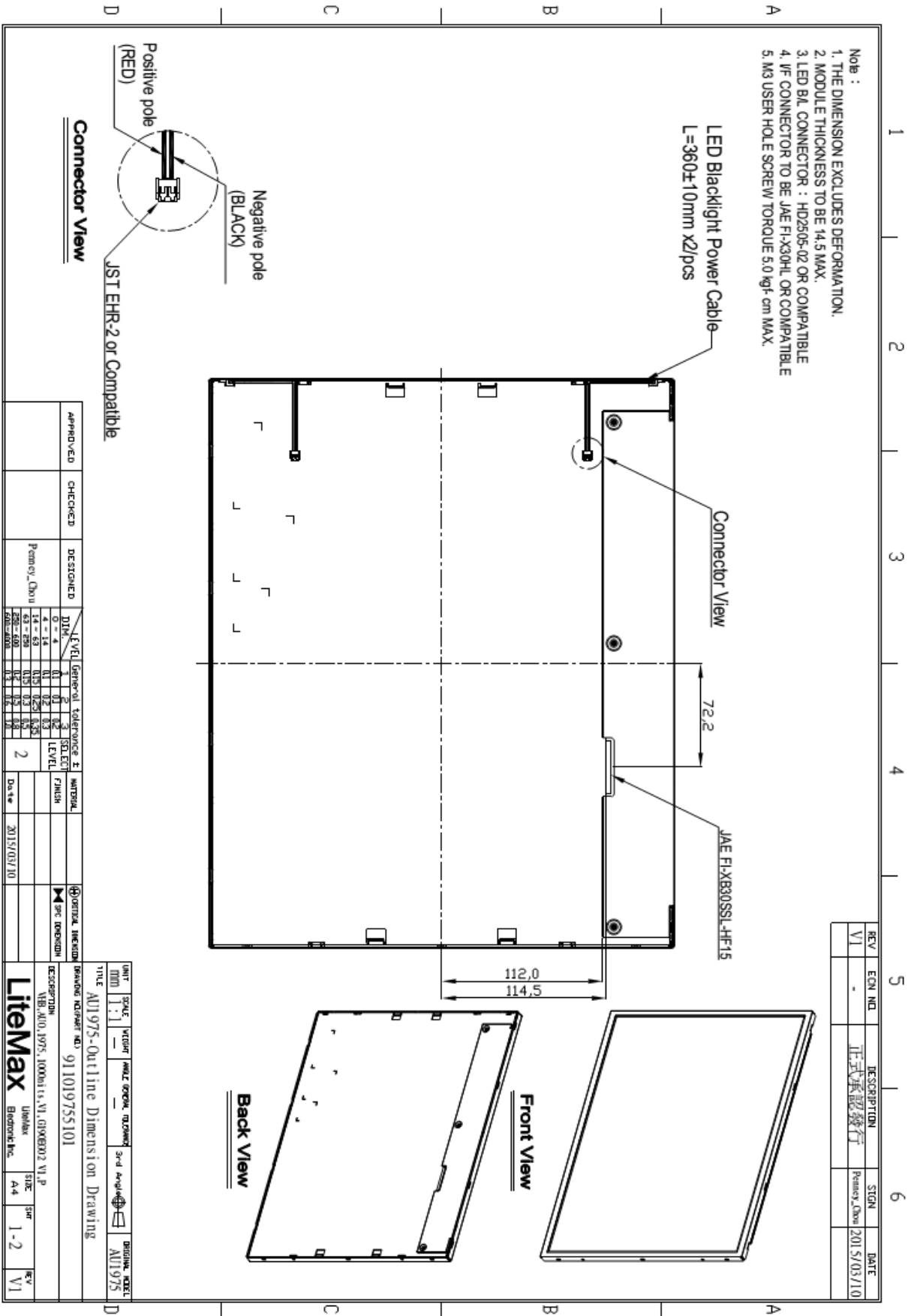
REV	EQU. NO.	DESCRIPTION	STGN	DATE
V1	-	正式承認發行	Premey,Obou 2015/03/10	6

APPROVED	CHECKED	DESIGNED	DATE
		Premey,Obou	2015/03/10

LEVEL	General	Tolerance ±	METHOD
1	0 - 0.1	0.1	LEVEL
2	0.1 - 0.2	0.2	LEVEL
3	0.2 - 0.3	0.3	LEVEL
4	0.3 - 0.5	0.5	LEVEL
5	0.5 - 1.0	1.0	LEVEL
6	1.0 - 2.0	2.0	LEVEL
7	2.0 - 3.0	3.0	LEVEL
8	3.0 - 5.0	5.0	LEVEL
9	5.0 - 10.0	10.0	LEVEL
10	10.0 - 20.0	20.0	LEVEL
11	20.0 - 50.0	50.0	LEVEL
12	50.0 - 100.0	100.0	LEVEL
13	100.0 - 200.0	200.0	LEVEL
14	200.0 - 500.0	500.0	LEVEL
15	500.0 - 1000.0	1000.0	LEVEL

UNIT	SCALE	TYPICAL	SCALE	DATE
MM	1:1			

TYPE	MODEL	REV
AU1975-Outline Dimension Drawing		V1





Ordering Information

Part Number	Description
DLF1975-ENN-A01	19",1000nits,SXGA,LID19,V01.(w/o boss 5 in 1)
DLH1975-ENN-G01	19",1000nits,SXGA,LID19,AD2662GD,V01

Optional Accessories

Part Number	Description
840612051210	ADAPTER,AC/DC,12V/5.4A,65W,A065112-TDx.4P SLIDING CAP,P
810618301010	CABLE.POWER.AC.1830mm USA type
810618301090	CABLE,POWER,AC,1830mm Europe type
810618301050	CABLE.POWER.AC.1830mm UK type
810618301170	CABLE.POWER,AC,1830mm Australia type
810618301030	CABLE.POWER.AC.1830mm Japan type