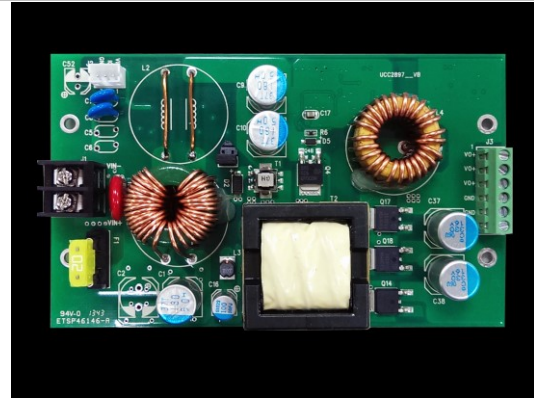




IPW08012V 80W DC/DC Isolation Power Converter Module

Key Features:

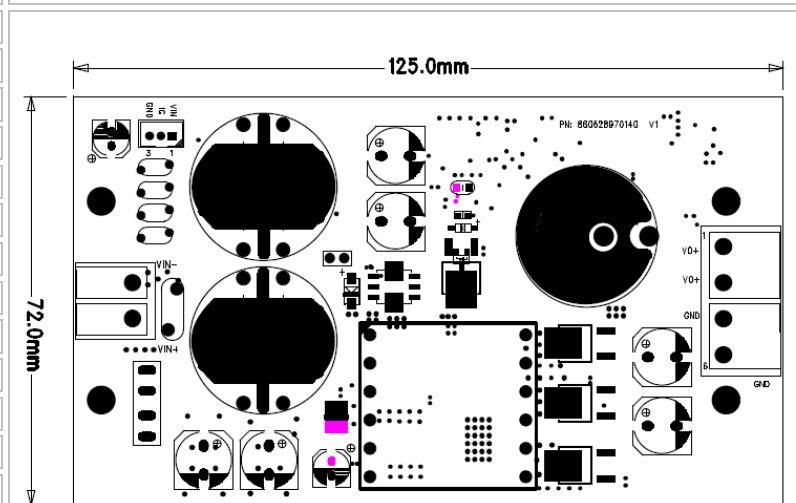
- 9 ~ 36V Wide Input Voltage.
- Single 12V DC Voltage Output.
- 80W Max Load
- High Efficiency up to 91%
- Short Circuit Protection
- Over Current/Voltage protection
- Ignition Shutdown Control
- ROHS Compliant



Specification

Input Voltage:	9 ~ 36V DC
Input Current (Max.):	11.2 A @ 9V
Output Voltage:	12V DC
Output Power (Max.):	80W (6.6A @ 12V)
Efficiency:	Up to 91%
Noise and Ripple:	< 100 mV
Line Regulation:	< 1%
Load Regulation:	< 5%
Operation Temperature:	-20 °C ~ 60 °C
Storage Temperature:	-20 °C ~ 80 °C
Dimensions (L/W/H):	125 x 72 x 20 mm

Out Line Dimension



Power Connector Pin Assignment:

Vin: Input Voltage

Vout: Output Voltage

Ordering Information

Part No.	Description
880610013010	PCBA,IPWR,IPWR08012VA01.V1.0,Isolated,9~36Vin,12Vout.80W,P

Specifications are subject to change without notice.

All brands or product names are trademarks or registered trademarks of their respective companies.