

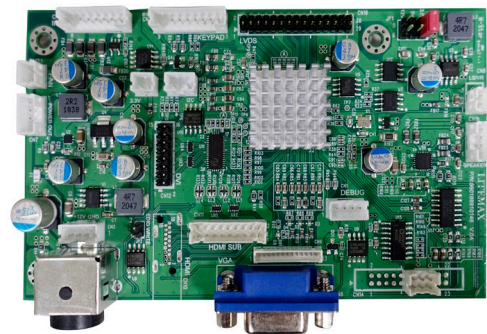
AD8891G-DH

Display Control Board, WUXGA

AD8891G-DH is a high integrated display controller solution for producing real time, top quality digital video and computer graphic images on LCD panel. The AD8891G-DH provides an ideal interface between industry standard digital graphics controllers and a wide variety of LCD panel devices. It has a VGA, DVI-D and HDMI input.

Key Features

- Max Resolution Up To Full HD
- Analog RGB Input up to 205MHz
- ULTRA-RELIABLE DVI-D Input (CN12 Pin header)
- HDMI Input (HDMI1.3) (CN11 Pin header) (CN10 Optional)
- Dual/Single LVDS interface
- Inverter Analog or PWM Dimming Control
- Support Panel DC 3.6V/5V/12V Output
- OSD Control
- External RS232 control (Optional)
- Input Power DC 12V
- Audio Speaker Out (MAX 3W 4Ω)(optional) , Audio In (Optional)
- *External Digital Light Sensor Brightness Control (Optional)
- *External Light Sensor Brightness Control or VR (Optional)
- Support Output Voltage 12V(1A) and 5V(1A)
- External FAN Control (optional)



Specifications

V1

Model No.	AD8891G-DH
Max. Resolution	WUXGA (1920X1200)
Interface	Dual/Single LVDS
Input Power	DC 12V
Panel Power Selection	3.6V, 5V,12V
Video Input	VGA, DVI-D, HDMI
Light Sensor	Yes (Optional)
RS232 Control Port	Yes (Optional)
IR	Yes (Optional)
External VR Control	Yes (Optional)
Board Dimension	125 x 75 mm
F / R Control Button	<input type="checkbox"/> 4 Key
<input type="checkbox"/> 4 Key	Power Switch, Menu, Select (+,-)
OSD Menu	Brightness, Color, Contrast, Auto Turing, H/V Position...etc
Operating Temperature	-30 °C ~ 85 °C
Storage Temperature	-30 °C ~ 85 °C

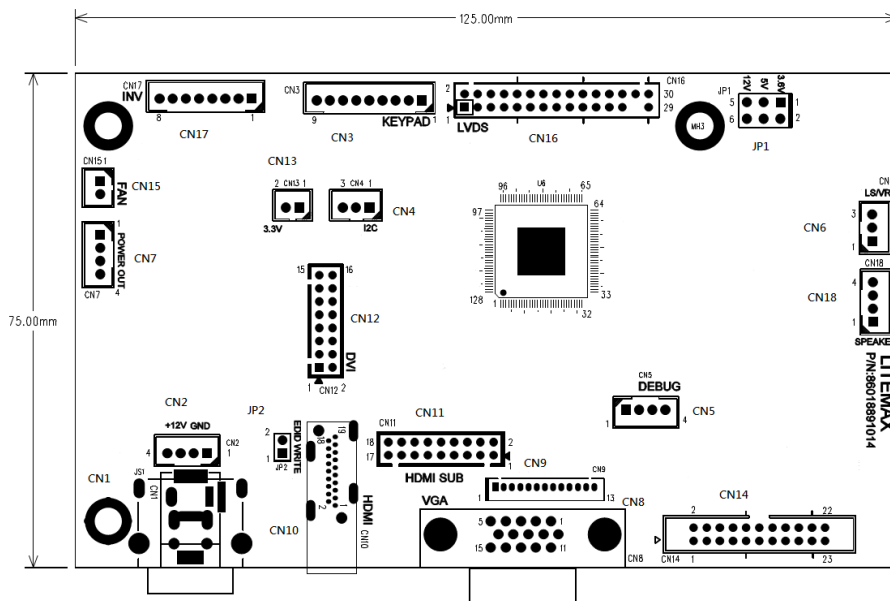
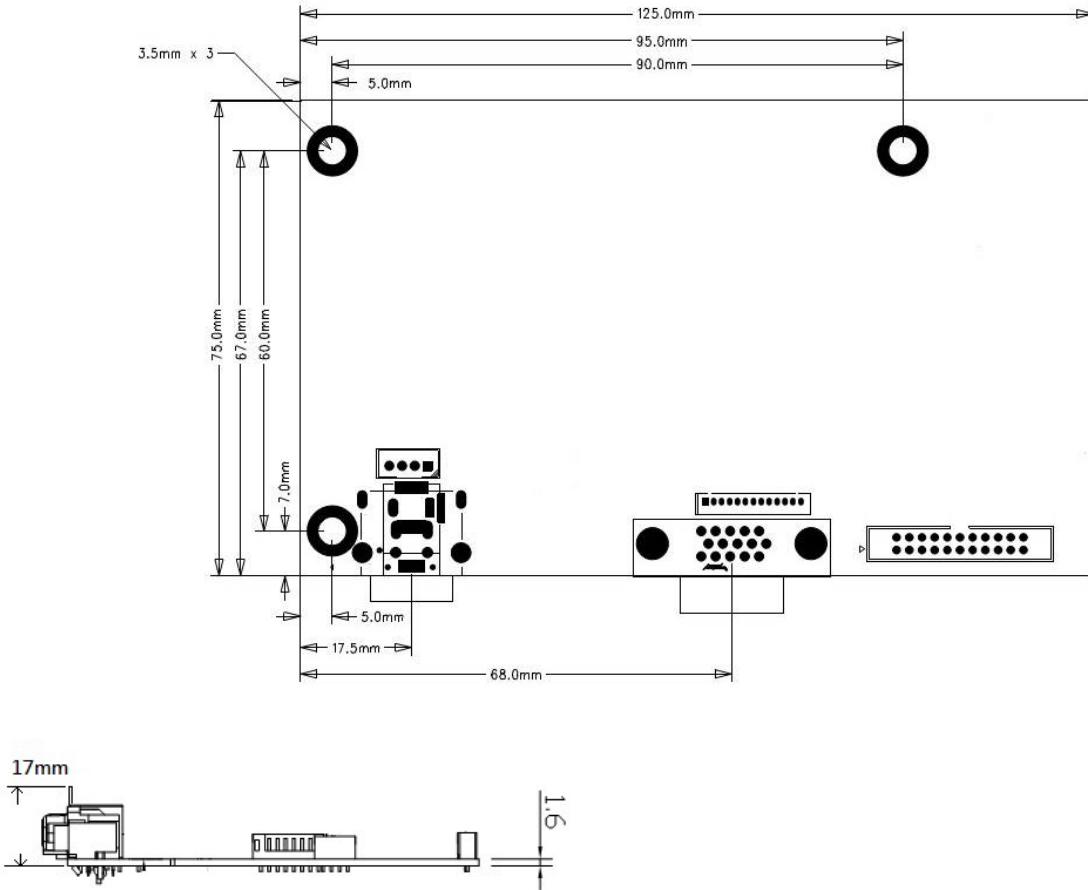
Specifications are subject to change without notice.

All brands or product names are trademarks or registered trademarks of their respective companies.

Outline Dimensions

Unit:mm

AD8891G-DH 125mmx75mm





Ordering Information

Part Number	Description
880188911101	PCBA,AD,AD8891G-DH,V1.0,12V IN,POWER DIN,PWM,P
880188911102	PCBA,AD,AD8891G-DH,V1.0,12V IN,POWER DIN,DC,LVDS 3.6V,P

Optional Accessories

Part Number	Description
800807604000	CABLE,OTHER,LS,760mm,26AWG,2.0mm 2P,LS3505-HC4,SA-57S A&B,BLE-L-308-N,AD2662, R
800805504000	CABLE,OTHER,DLS,550mm.26AWG,1.25mm 5P TO 2.0mm 2P/3P,R