



## DLF1825 / DLH1825 V2 18.5" Wide TFT LCD, LED Backlight 1000nits, WXGA

18.5" Wide TFT LCD panel, built-in 1000 nits high bright for sunlight readable LCD display, high transmittance color filter, high transmission polarizing plates, Low Power Consumption, suitable for kiosk, advertising, POS, transportation, gaming, studio display, gas pump.

### Key Features

- Sunlight Readable
- LED Backlight
- High Shock & Vibration Resistance
- Low Power Consumption
- High Uniformity
- Low EMI Noise
- Wide Dimming
- BL MTBF: 70,000 hours



### Specifications

V1

Model No.	DLF1825 V2	DLH1825 V2
Description	18.5" Wide TFT LCD, LED Backlight 1000nits, WXGA	
Display Area (mm)	409.8(H) x 230.4(V) mm	
Brightness	1000 cd/m <sup>2</sup>	
Resolution	1366x768 (WXGA)	
Contrast Ratio	1250 : 1	
Pixel Pitch (mm)	0.3(H) x 0.3(V)	
Viewing Angle	+85°~ -85°(H), +80°~ -80°(V)	
Display Colors	16.7M	
Response Time (Typical)	5ms	
Sync	LVDS	
Power Consumption	16W/21W	
Dimensions (mm)	430.4x254.6x13.35	
Weight (Net)	1.3Kg	
LED Driving Board	LID 18A	
Control Board (Optional)	<input type="checkbox"/> AD2662GD <input type="checkbox"/> AD2662GDVAR	
<input type="checkbox"/> AD2662GD	VGA+DVI	
<input type="checkbox"/> AD2662GDVAR	VGA+DVI +CVBS+S-Video+Audio+RS232	
F / R Control Button	<input type="checkbox"/> 5 Key <input type="checkbox"/> 4 Key	
<input type="checkbox"/> 5 Key	Power Switch, Menu, Select (+,-), Auto	
<input type="checkbox"/> 4 Key	Power Switch, Menu, Select (+,-),	
OSD Menu	Brightness, Contrast, H/V Position, Color, Phase, Clock...	
Optional	<input type="checkbox"/> AOT <input type="checkbox"/> Touch Screen	

Specifications are subject to change without notice.

All brands or product names are trademarks or registered trademarks of their respective companies.

**DLF**= Panel+LED Driving Board

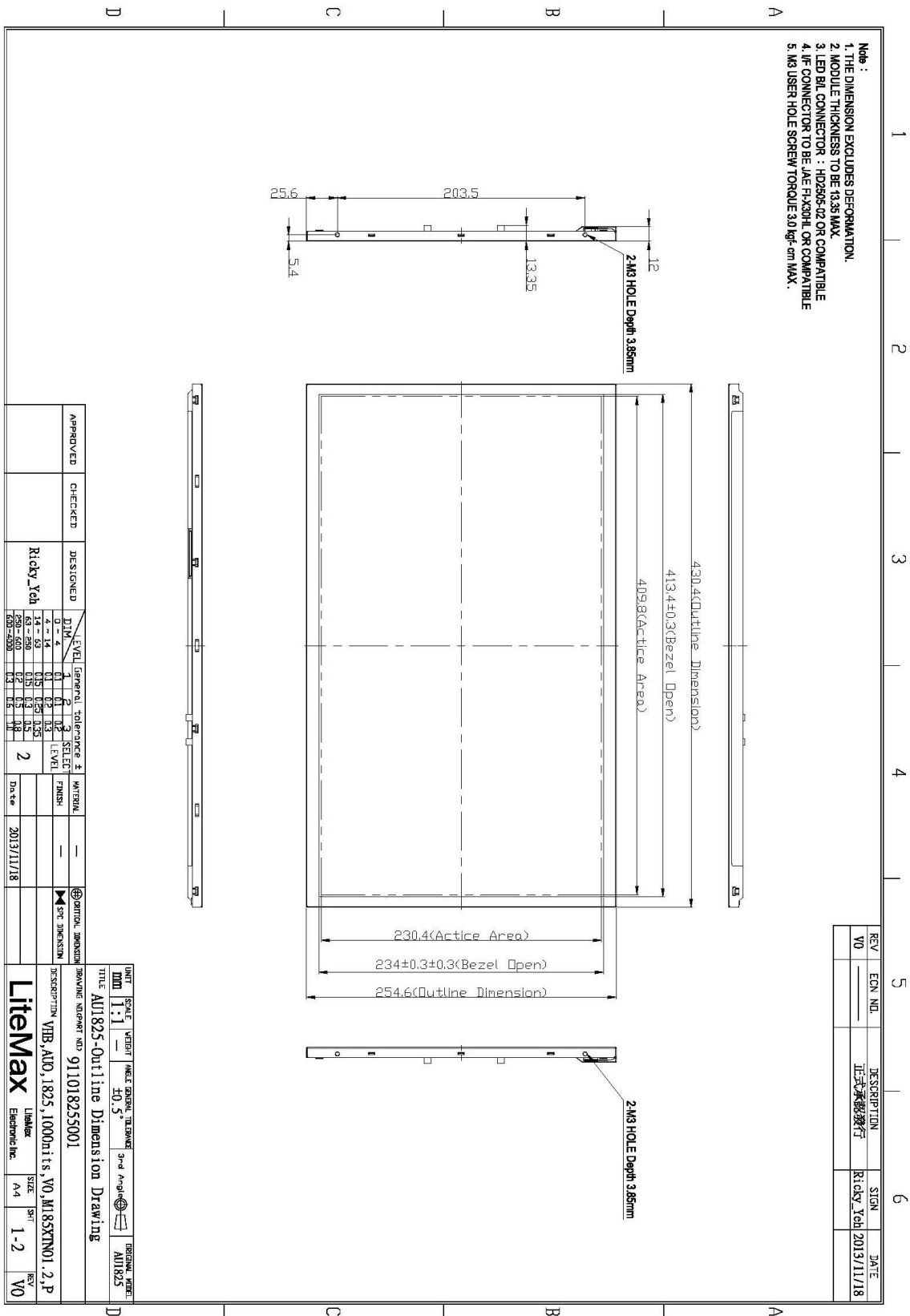
**DLH**= Panel+LED Driving Board+Control Board



# Mechanical Drawing

## Outline Dimensions

Unit:mm



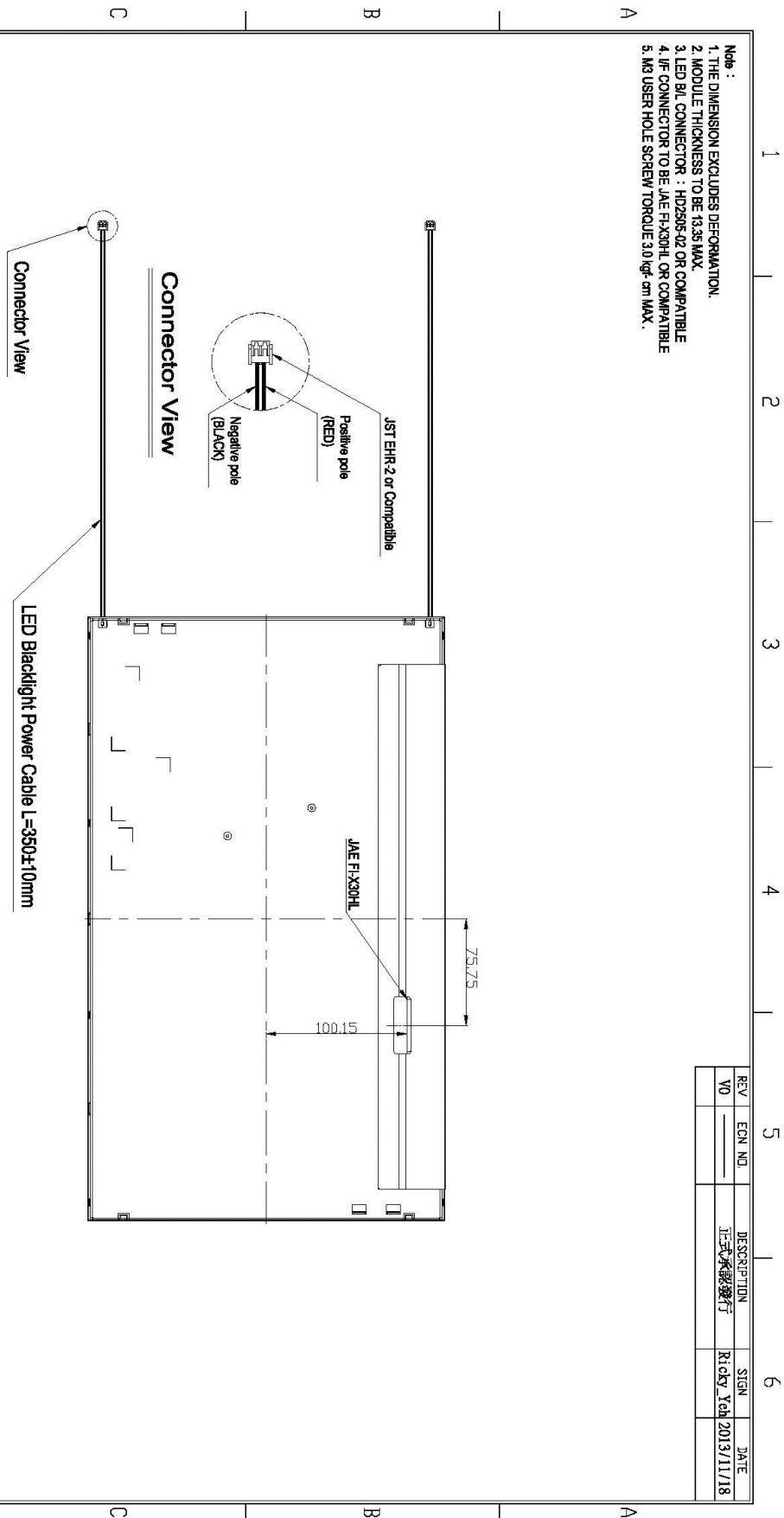
APPROVED	CHECKED	DESIGNED	Ricky_Yeh
		DATE	2013/11/18

REV	ECN NO.	DESCRIPTION	STCN	DATE
V0		正式承認發行	Ricky_Yeh	2013/11/18

A4 297x210mm



- Note :
1. THE DIMENSION EXCLUDES DEFORMATION.
  2. MODULE THICKNESS TO BE 13.35 MAX.
  3. LED B/L CONNECTOR : HD2505-02 OR COMPATIBLE
  4. JF-CONNECTOR TO BE JAE FHX30HL OR COMPATIBLE
  5. M3 USER HOLE SCREW TORQUE 3.0 kgf-cm MAX.



REV	EQD NO	DESCRIPTION	SIGN	DATE
V0		正式承認發行	Ricky Yeh	2013/11/18

APPROVED	CHECKED	DESIGNED	DATE
		Ricky_Yeh	2013/11/18

UNIT	SCALE	WEIGHT	FINAL GENERAL TOLERANCE	3rd Angle	ORIGINAL MODEL
mm	1:1		±0.5°		AU1825

TITLE AU1825-Outline Dimension Drawing

DESCRIPTION VHB, AU0, 1825, 1000units V0, M185XTN01.2, P

DRAWING NUMBER NO 911018255001

LEVEL	GENERAL TOLERANCE ±	LEVEL	FINISH
0.2 - 4	0.1	0.2	
4 - 14	0.1	0.2	
14 - 63	0.15	0.25	
63 - 250	0.3	0.5	
250 - 500	0.5	0.7	
500 - 1000	0.7	1.0	

DATE 2013/11/18

INT. DIMENSION

EXTERNAL DIMENSION

DATE

A4 297x210mm



### Ordering Information

Part Number	Description
<b>DLF1825-ENN-A11</b>	18.5",1000nits,WXGA,LID18A,V2(5 in 1)
<b>DLH1825-ENN-G11</b>	18.5",1000nits,WXGA,LID18A.AD2662GD,DC 12V input.V2(5 in 1)

### Optional Accessories

Part Number	Description
<b>840612051210</b>	ADAPTER,AC/DC,12V/5 .4A,65W,Atech OEM A065112-TDx.4P SLIDING CAP,P
<b>810618301010</b>	CABLE.POWER.AC.1830mm USA type
<b>810618301090</b>	CABLE,POWER,AC,1830mm Europe type
<b>810618301050</b>	CABLE.POWER.AC.1830mm UK type
<b>810618301170</b>	CABLE.POWER,AC,1830mm Australia type
<b>810618301030</b>	CABLE.POWER.AC.1830mm Japan type