



**product description**

**Introduction**

**Features:**

- 1000 nits Sunlight Readable LCD
- Long Life, Low Power Consumption LED Backlight
- -10°C~50°C Wide Operating Temperature
- Advanced Optical Bonding (AOT)
- High Shock & Vibration Resistance
- Resistive Touch Support
- IP65 Fascial Waterproof

**Application:**

- Marine
- Outdoor Display



**Specifications**

V1

<b>Model Number</b>	<b>NPS1935</b>
<b>LCD Display</b>	
<b>Backlight</b>	19" LED Backlight
<b>Active Display Area</b>	376.32x301.06 mm
<b>Brightness</b>	1000 cd/m2
<b>Resolution</b>	1280x1024 (SXGA)
<b>Contrast Ratio</b>	1000:1
<b>Touch Screen</b>	5-Wire, Analog Resistive / AR Glass
<b>Optical</b>	AOT
<b>System</b>	
<b>Processor</b>	Intelf Celeron M / Core 2 Duo Based Design
<b>Chip Set</b>	Intelf 945GM + ICH7M
<b>Memory</b>	DDR II DIMM 1GB
<b>Ethernet</b>	Intelf 82573L 10/100/1000Base-TX RJ45x2
<b>Storage</b>	SATA 2.5" HDD (Optional)
<b>I/O Port</b>	Audio Phone Jack (Line-in, Line-out, MIC-in) x 1, RJ45 x2,USB x4, COMx2 (RS232 x1, RS232 /422 /485 x1), DVI-I x1, VGA-out x 1,KB/MS PS2 x 1,Power AC-in x1
<b>BIOS</b>	Award
<b>Wake on LAN</b>	Yes
<b>Watchdog Timer</b>	Generates a time-out system reset
<b>H/W Status Monitor</b>	Support power supply voltages, fan speed and temperature monitoring
<b>Expansion Interface</b>	Mini PCI (internal)
<b>Power</b>	
<b>Voltage</b>	AC Input: AC 100 ~ 240V ;DC Input (Optional)
<b>Power consumption</b>	75W
<b>Mechanical</b>	
<b>IP Rating</b>	Fascial waterproof to IP65 standards when console mounted.
<b>Construction</b>	Aluminum Alloy Chassis
<b>Mounting</b>	Panel (Flush) Mount , VESA75/VESA100, Stand Mount
<b>Dimension</b>	447mm (W) x 390.6mm(H) x 91.5mm(D)
<b>Net Weight</b>	7.2kg
<b>Environmental</b>	
<b>Operating Temperature</b>	-10°C~40°C
<b>Storage Temperature</b>	-20°C ~ 80°C
<b>Operating Humidity</b>	5~95% @ 40°C, non-condensing
<b>Certification</b>	Designed to meet CE/FCC

Specifications are subject to change without notice.

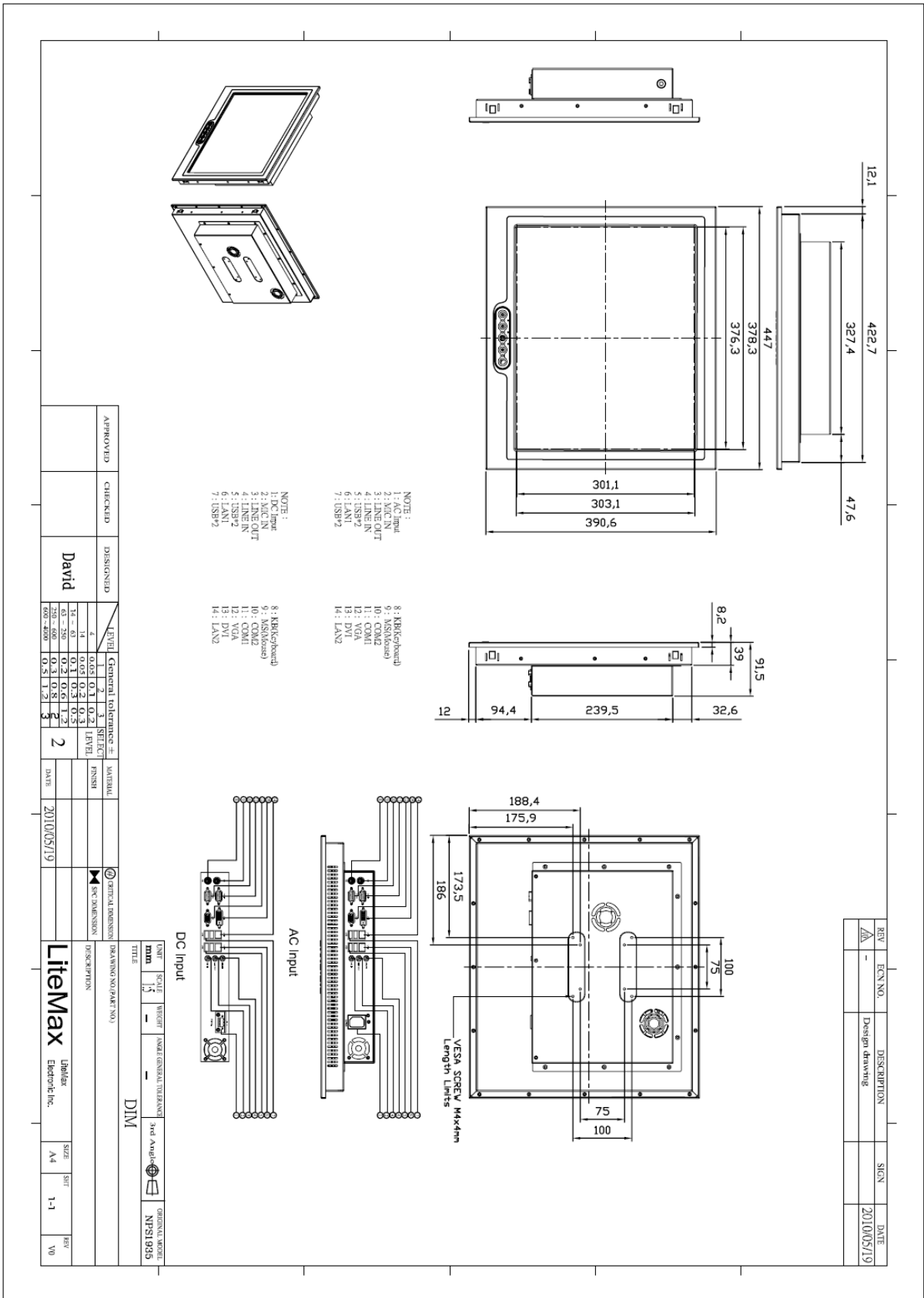
All brands or product names are trademarks or registered trademarks of their respective companies.



# Mechanical Drawing

## Outline Dimensions

Unit:mm



APPROVED	CHECKED	DESIGNED	LEVEL	General tolerance ±	MATERIAL
		David	1	0.05	
			2	0.1	
			3	0.2	
			4	0.3	
			5	0.4	
			6	0.5	
			7	0.6	
			8	0.8	
			9	1.2	
			2		

DATE	DESCRIPTION
2010/05/19	

REV	ECN NO.	DESCRIPTION	SIGN	DATE
1		Design drawing		2010/05/19

<b>LitexMax</b>		SIZE	A4	REV	1-1
Electronic Inc.		SHEET		NO	10

SCALE	1:1	DATE	2010/05/19
UNIT	mm	DESIGNER	DAVID
TITLE	DIM		
PROJECT	NP21035		



**Ordering Information**

Part Number	Description
NPS1935-ETAW-142-A01	19" LED B/L 1000nits.Touch Screen(Transparency:80%).Intel Celeron M 1.86GHz,DDR II.DIMM 1GB,RJ45*2,USB*4,COM*2.AC 100~240V,HDD/250GB,AOT,WP
NPS1935-ETAW-142-A02	19" LED B/L 1000nits , Touch.Screen(Transparency:80%),Intel.Celeron M 1.86GHz,DDR II DIMM.1GB,RJ45*2,USB*4,COM*2.DC10~30V,HDD/250GB,AOT,WP
NPS1935-ETAW-363-A01	19"LED B/L 1000Nits.Touch Screen(Transparency:80%).Intel Core 2 Duo 2.16GHz,DDRII.DIMM 2GB,RJ45*2,USB*4,COM*2.AC 100~240V,HDD/250GB,AOT,WP
NPS1935-ETAW-363-A02	19",LED B/L 1000 Nits.Touch Screen(Transparency:80%).Intel Core 2 Duo 2.16GHz.DDR II DIMM 2GB,RJ45*2,USB*4.COM*2,DC10~30V,HDD/250GB,AOT.WP

**Optional Accessories**

Part Number	Description
980000480010	SET.OTHER,CD for AP.(NPS1535/1735/1935),all
980000430010	SET,other,CD for XPe O.S Image.(NPS1535/1735/1935),all
321038174501	Print,Label,Serial,LP,1745,V0.Microsoft OS/XP Embedded.968TXPEEMB
810618301010	CABLE.POWER.AC.1830mm USA type
810618301090	CABLE.POWER.AC,1830mm Europe type
810618301050	CABLE.POWER.AC.1830mm UK type
810618301170	CABLE.POWER.AC,1830mm Australia type
810618301030	CABLE.POWER.AC.1830mm Japan type
840612073000	ADAPTER,12V,7.0A84W.LE-0316B120084.NLE-0316BS12V-AE