

NPD2118

21.5" IP65 Sunlight Readable Multi-Touch Marine Display

NAVPIXEL NPD2118, the high-performance, rugged touch monitor, is specially engineered to survive from the most demanding working environment. Housed in a milled billet aluminum case, the slim-profile NAVPIXEL NPD2118 is light weight and watertight. The front-mounted sunlight readable touch screen makes the industrial rugged monitor vividly and user-friendly. In addition, the high power efficiency and low heat design guarantee the stability and longevity required for mission critical deployment.

Features:

- 1600 nits Sunlight Readable LCD
- Long Life, Low Power Consumption LED Backlight
- Wide Operating Temperature
- Picture In Picture Function
- Advanced Optical Bonding (AOT)
- High Shock & Vibration Resistance
- Projected Capacitive Multi-Touch Support
- IP65 Facial Waterproof
- Isolation Power 9-36V DC Input

Application:

- Marine



Specifications

V1

Model Number	NPD2118
Description	21'5" IP65 Sunlight Readable Multi-Touch Marine Display
Backlight	LED Backlight
Active Display Area	476.64 x 268.11mm
Brightness	1600 cd/m ²
Resolution	1920x1080 (FHD)
Contrast Ratio	1100:1
Pixel Pitch (mm)	0.248(H) x 0.248 (V)
Viewing Angle	170 (H), 160(V)
Display Color	16.7M
Response Time	5ms
Inputs	VGAX2, DVIX2, Compositex3, RS232x1, USBx1
PIP Support	3 Stages (child, split & wide screen)
Mechanical	
IP Rating	Facial waterproof to IP65 standards when console mounted.
Construction	Rugged Aluminum Alloy Chassis
Mounting	Panel (Flush) mount, VESA mount
Dimension (mm)	557.6(W) x 383.2(H) x 56.9(D)
Net Weight	6kg
Power	
Voltage	DC Input Voltage: DC 9~36V
Power Consumption	47W
Environmental	
Operating Temperature	-10°C~50°C
Non-Operating Temperature	-20°C~70°C
Certification	Designed to meet CE / FCC Class A
Marine Type Approval	Designed to meet CE/FCC & BV Marine Approval Pending

Specifications are subject to change without notice.

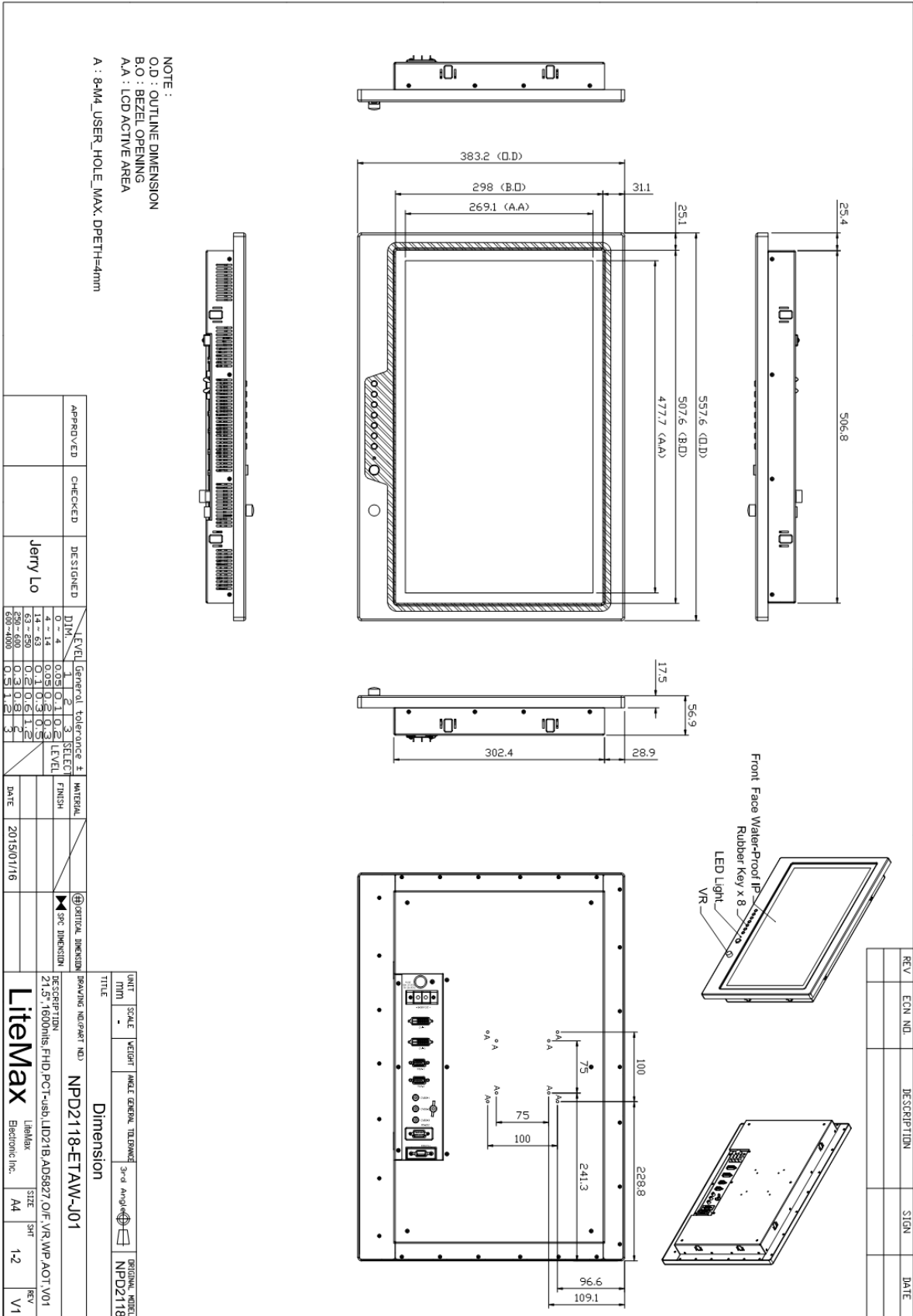
All brands or product names are trademarks or registered trademarks of their respective companies.



Mechanical Drawing

Outline Dimensions

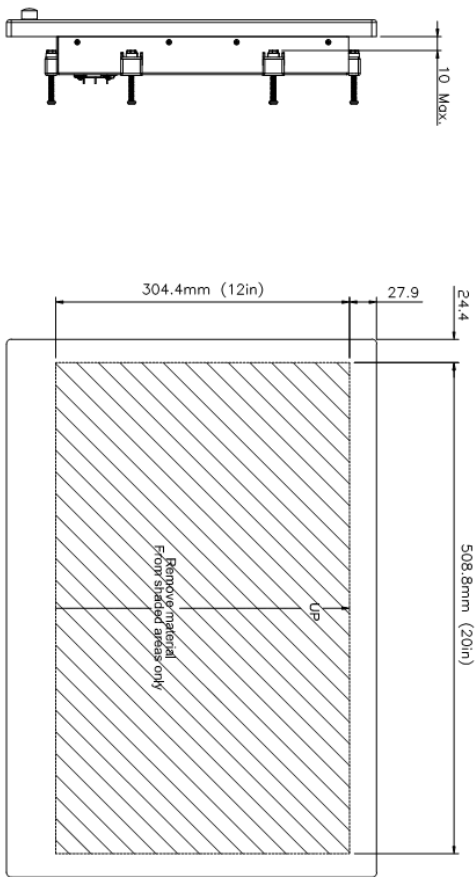
Unit:mm





REV	ECN NO.	DESCRIPTION	SIGN	DATE

NPD2118 Flush Mount Template



Side View

Back View

APPROVED	CHECKED	DESIGNED	LEVEL	General tolerance ±	MATERIAL	VERTICAL DIMENSION	DESCRIPTION
		Jerry Lo	DIM	1 2 3 SELECT LEVEL			NPD2118-ETAW-J01
			0 ~ 4	0.05 0.1 0.2 0.3			21.5" 1600nits; FHD PCT-usb LID218 ADS827 O/F VR WP AOT V01
			4 ~ 14	0.1 0.3 0.5 1			
			14 ~ 63	0.2 0.5 1 2			
			63 ~ 250	0.5 1 2 3			
			250 ~ 500	1 2 3			
			500 ~ 1000	2 3			
			DATE				
			2015/01/16				

UNIT	SCALE	WEIGHT	ANGLE	GENERAL TOLERANCE	3rd Angle	ORIGINAL NAME
MM						NPD2118

DRAWING NO./PART NO.		DATE	SIZE	REV
NPD2118-ETAW-J01			A4	V1



Ordering Information

Part Number	Description
NPD2118-ETAW-J01	21.5",1600nits,FHD,PCT-usb(T=90%),LID21B,AD5827,O/F,VR,WP,AOT,V1

Optional Accessories

Part Number	Description
980000300010	SET,OTHER,CD for User.Menu&Touch driver(NPD series)
810650005110	CABLE,POWER,DC,5000mm,TER.MINAL TO OPEN,14AWG*2C+BRA.ID,COOL GRAY 7C PVC JACKET,P
810130001000	CABLE.VGA.3000mm.D-SUB15P MALE.BLUE TO D-SUB 15P MALE BLUE.BLACK.P
321189155501	Print,Menu,User,NPD.1555,V0,series,P
321179211801	Print,Menu,Install,NPD,2118,V0.Flush mount template,P
112615315401 x (4)	Metal,SPCC,NPS,1531,Lock,V0,P
214032121101 x (4)	Screw,M4,32mm,Round,Ni,P
460100002101 x (4)	Fixture,other,MP-4,V0,P
980000560010 (Optional)	SET,OTHER,ADAPTER REWORK.60W KPA-060F WITH Y TYPE.TERMINAL,P
810618301010 (Optional)	CABLE.POWER.AC.1830mm USA type
810618301090 (Optional)	CABLE,POWER,AC,1830mm Europe type
810618301050 (Optional)	CABLE.POWER.AC.1830mm UK type
810618301170 (Optional)	CABLE.POWER,AC,1830mm Australia type
810618301030 (Optional)	CABLE.POWER.AC.1830mm Japan type