



## SLD1068-E 10.4" TFT LCD, 1600 nits LED Backlight, 800x600

The SLD1068-E is a 10.4 inch industrial grade sunlight readable LCD, with high brightness 1600 nits, it produce sharp images, crisp text and lifelike colors. The Durapixel LED backlight technology ensures high reliability and low power consumption, suitable for outdoor application, kiosk, factory automation, military, transportation and gaming application.

### Key Features

- 10.4" sunlight readable, high brightness
- Resolutions: 800x600
- Industry leading LED Backlight
- Aspect ratio of 4:3
- Wide temperature (-20°C~70°C)
- Low power consumption
- BL MTBF: 70,000 hours



## Specifications

<b>Model Name</b>	<b>SLD1068-E</b>
<b>Description</b>	10.4" TFT LCD, 1600nits LED Backlight, 800x600
<b>Screen Size</b>	10.4"
<b>Display Area (mm)</b>	211.2 (H) x 158.4(V) mm
<b>Brightness</b>	1600 cd/m <sup>2</sup>
<b>Resolution</b>	800x600
<b>Aspect Ratio</b>	4:3
<b>Contrast Ratio</b>	400 : 1
<b>Pixel Pitch (mm)</b>	0.264(H) x 0.264(V)
<b>Pixel Pre Inch (PPI)</b>	96
<b>Viewing Angle</b>	130°(H),110°(V)
<b>Color Saturation (NTSC)</b>	55%
<b>Display Colors</b>	262K
<b>Response Time (Typical)</b>	25ms
<b>Panel Interface</b>	LVDS
<b>Input Interface</b>	VGA, DVI-D
<b>Input Power</b>	DC 12V
<b>Power Consumption</b>	10.3W
<b>OSD Key</b>	4 Keys (Power Switch, Menu, +, -)
<b>OSD Control</b>	Brightness, Color, Contrast, H/V Position...etc
<b>Dimensions (mm)</b>	249.2 x 206.2 x 45.8 (T)
<b>Bezel Size(U/B/L/R)</b>	12.2/33.9/17.85/17.85 mm
<b>Mounting</b>	75 x 75 mm
<b>Weight (Net)</b>	1.64 kg
<b>Operating Temperature</b>	-20°C ~ 70°C
<b>Storage Temperature</b>	-30°C ~ 80°C

SLD= Panel + LED Driving Board + AD Control Board + Chassis

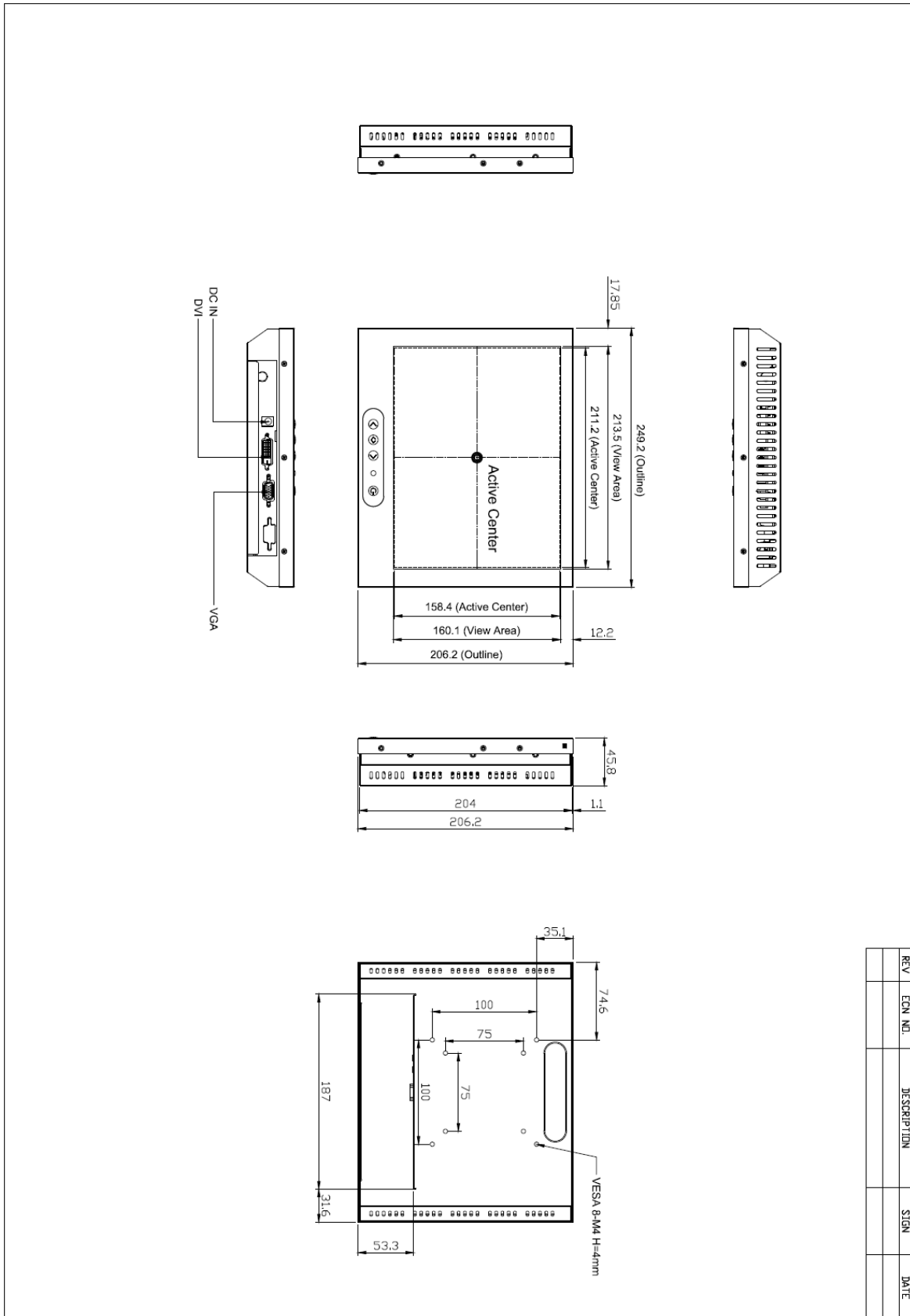
Specifications are subject to change without notice.  
All brands or product names are trademarks or registered trademarks of their respective companies.



## Mechanical Drawing

### Outline Dimensions

Unit:mm



REV	ECN NO.	DESCRIPTION	SIGN	DATE



### Ordering Information

Part Number	Description
<b>SLD1068-EGA-I01</b>	10.4",1600nits,SVGA,LID10A09,AD6038GD,O/F,AR Glass,V01

### Optional Accessories

Part Number	Description
<b>840612051100</b>	ADAPTER,12V,5A,60W,EA1050A,P
<b>810618301010</b>	CABLE,POWER,AC,1830mm USA type
<b>810618301090</b>	CABLE,POWER,AC,1830mm Europe type
<b>810618301050</b>	CABLE,POWER,AC,1830mm UK type
<b>810618301170</b>	CABLE,POWER,AC,1830mm Australia type
<b>810618301030</b>	CABLE,POWER,AC,1830mm Japan type