

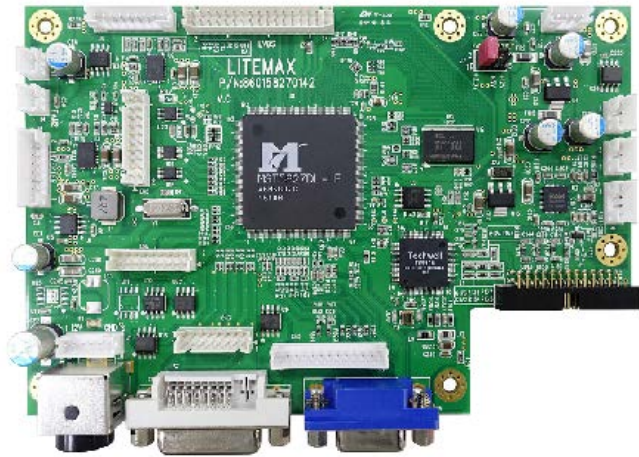
AD5827GDHPVARM

Display Control Board, WUXGA

AD5827GDHPVAR is a high integrated display controller solution for producing real time, top quality digital video and computer graphic images on LCD panel. The AD5827GDHPVAR provides an ideal interface between industry standard digital graphics controllers and a wide variety of LCD panel devices. It has a display port and DVI-D input. Rev.1 is European RoHS compliant., resolution can support all coming VESA modes and up to WUXGA (1920x1200)

Key Features

- Max Resolution Up To WUXGA
- Analog RGB Input up to 205MHz
- DVI operates up to 165MHz
- 1 ULTRA-RELIABLE DVI INPUT
- 1 VGA INPUT
- 1 HDMI(HDMI 1.3) Input (Optional)
- 1 Display port Input (DP 1.1a)(Optional)
- Dual/single LVDS interface
- Support Panel DC5V or 3.3V, 12V Output
- External Fan Control by Software
- OSD Control
- Inverter Analog or PWM Dimming Control
- *External V.R. brightness control (Optional)
- *External light sensor brightness control (Optional)
- *External RS232 control (Optional)
- *External AV Input (Optional)
- *External S-Video Input (Optional)
- *External Y,Pb,Pr Input (Optional)
- *External Audio Input (Optional)
- Input Power 24Vdc,or 12Vdc



Specifications

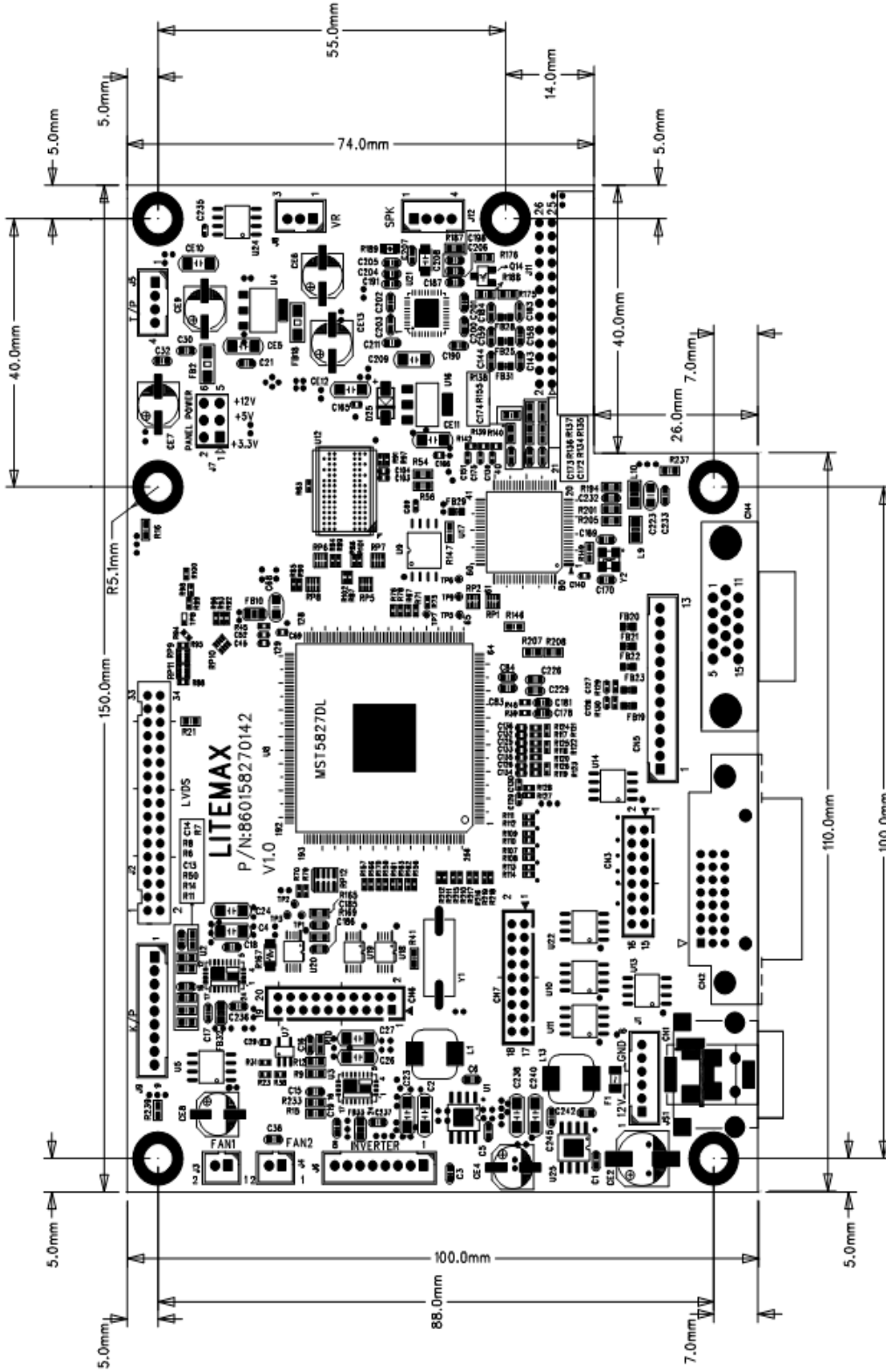
V1

Model No.	AD5827GDHPVAR
Chip	MST5827DL
Max. Resolution	WUXGA (1920x1200)
Interface	Single(30bits) / Dual (60bits) LVDS
Input Power	DC 12V/24V
Panel Power Selection	3.3V, 5V
Video Input	DVI
Light Sensor	Yes
External VR Control	Yes
Board Dimension	110 x 100 mm
F / R Control Button	<input type="checkbox"/> 5 Key <input type="checkbox"/> 4 Key
<input type="checkbox"/> 5 Key	Power Switch, Menu, Select (+,-), Auto
<input type="checkbox"/> 4 Key	Power Switch, Menu, Select (+,-),
OSD Menu	Brightness, Contrast, H/V Position, Color, Phase, Clock...

Specifications are subject to change without notice.

All brands or product names are trademarks or registered trademarks of their respective companies.

AD5827GDHPVAR





Ordering Information

Part Number	Description
AD5827GDHPVAR: 880158271100	PCBA,AD,AD5827GDHPVR.V1.0,24V IN,POWER DIN,LS,PWM,P

Optional Accessories

Part Number	Description
980000020011	SET,OTHER,LIGHTSENSOR.(LS3101)WITH CABLE,L=760mm.AD2662,3M DP270,P
980000040010	VR with cable