

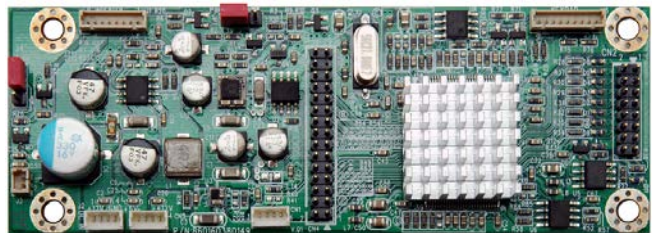
## AD6038DM

### Display Control Board, WUXGA

AD6038DM is a high integrated display controller solution for producing real time, top quality digital video and computer graphic images on LCD panel. The AD6038DM provides an ideal interface between industry standard digital graphics controllers and a wide variety of LCD panel devices. It has a display port and DVI-D input. Rev.1 is European RoHS compliant., resolution can support all coming VESA modes and up to WUXGA (1920x1200)

#### Key Features

- Maximum resolution WUXGA (1920x1200)
- Support dual pixel (48bits) LVDS and single pixel (24bits) LVDS
- Support refresh rate up to 75Hz, compatibility with standard VESA specification
- Support non-linear scaling from 4:3 to 16:9 or 16:9 to 4:3
- High resolution PWM dimming control output
- Provide one VR connector for external dimming control
- Provide IR remote control function



#### Specifications

V1

<b>Model No.</b>	<b>AD6038DM</b>
<b>Chip</b>	St6038
<b>Max. Resolution</b>	WUXGA (1920x1200)
<b>Interface</b>	Single (24bits) / Dual (48bits) LVDS
<b>Input Power</b>	DC 12V
<b>Panel Power Selection</b>	3.3V, 5V
<b>Video Input</b>	<b>DVI</b>
<b>Light Sensor</b>	Yes
<b>External VR Control</b>	Yes
<b>Board Dimension</b>	<b>113 x 40 mm</b>
<b>F / R Control Button</b>	<input type="checkbox"/> 5 Key <input type="checkbox"/> 4 Key
<input type="checkbox"/> 5 Key	Power Switch, Menu, Select (+,-), Auto
<input type="checkbox"/> 4 Key	Power Switch, Menu, Select (+,-),
<b>OSD Menu</b>	Brightness, Contrast, H/V Position, Color, Phase, Clock...

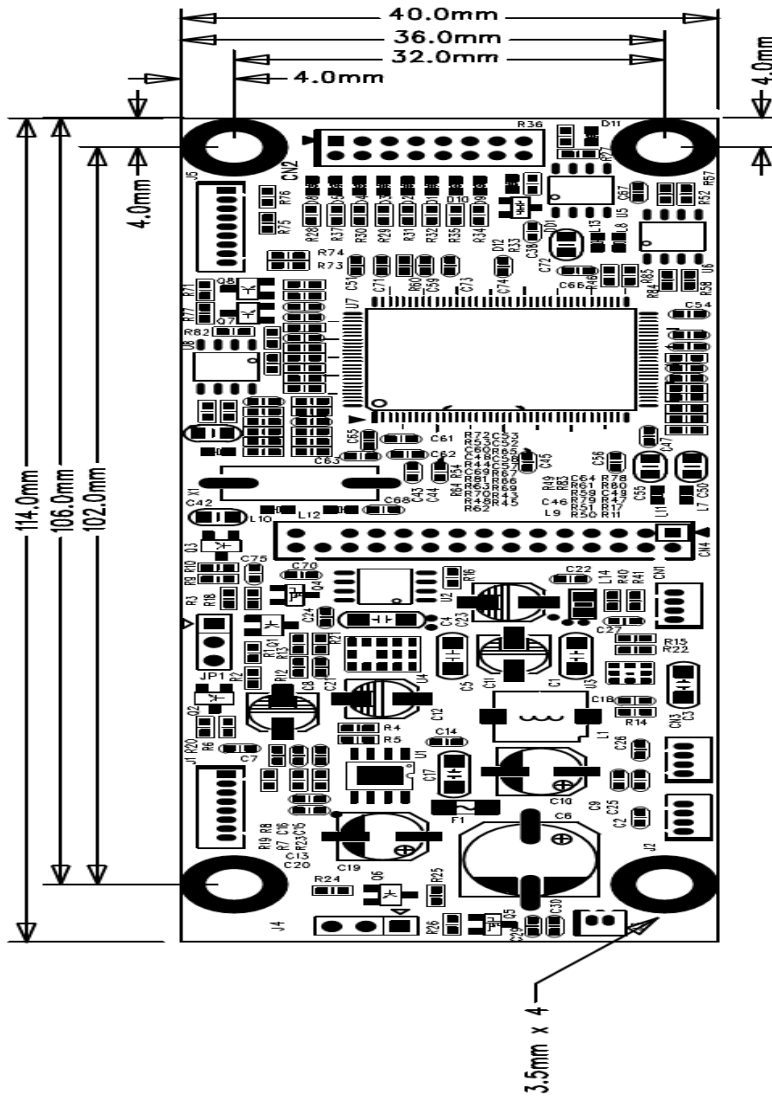
*Specifications are subject to change without notice.*

*All brands or product names are trademarks or registered trademarks of their respective companies.*

Outline Dimensions

Unit:mm

AD6038DM



**Ordering Information**

Part Number	Description
<b>AD6038DM:</b> 880160381019	PCBA,AD,AD6038DM,V1.0,P

**Optional Accessories**

Part Number	Description
980000020011	SET,OTHER,LIGHTSENSOR.(LS3101)WITH CABLE,L=760mm.AD2662,3M DP270,P
980000040010	VR with cable

